



SHOPFITTER
Product Catalogue

INTRODUCTION



Welcome to Die-Pat...

...and also to our inaugural brochure specifically tailored for the shopfitting industry, which includes sink units & bowls, hand wash basins, taps & pre-rinse sprays, gas & water hoses, canopy hood accessories, front of house equipment and castors, legs and feet.

Over 50 years after we began trading, we at Die-Pat – which remains a family owned business – take great pride in the standard of equipment and service we supply. Using only the highest quality products, Die-Pat ensure that all of our products will meet the requirements demanded by our customers, including our market leading ability to design and source products on behalf of customers for specific applications. Our aim is to achieve consistently high standards across all our services and products whilst maintaining a competitive edge on price.

Benefits we offer are:

- *Next day delivery*
- *Technical expertise across all our products*
- *Experienced staff to assist and guide our customers*
- *Large stock-holding of over 1400 different product ranges*
- *Dedicated customer service contacts*
- *External sales team for on-site support*

We hope you find our new brochure to be practical with useful and clear content, however if you cannot find the products you are looking for please visit www.die-pat.co.uk or telephone our friendly sales team on 01327 311144. The whole team here at Die-Pat are very much looking forward to working with you.

A handwritten signature in blue ink, appearing to read 'Eddy Edwards', is written over a light blue horizontal line.

Eddy Edwards
Managing Director



PRODUCT SECTIONS

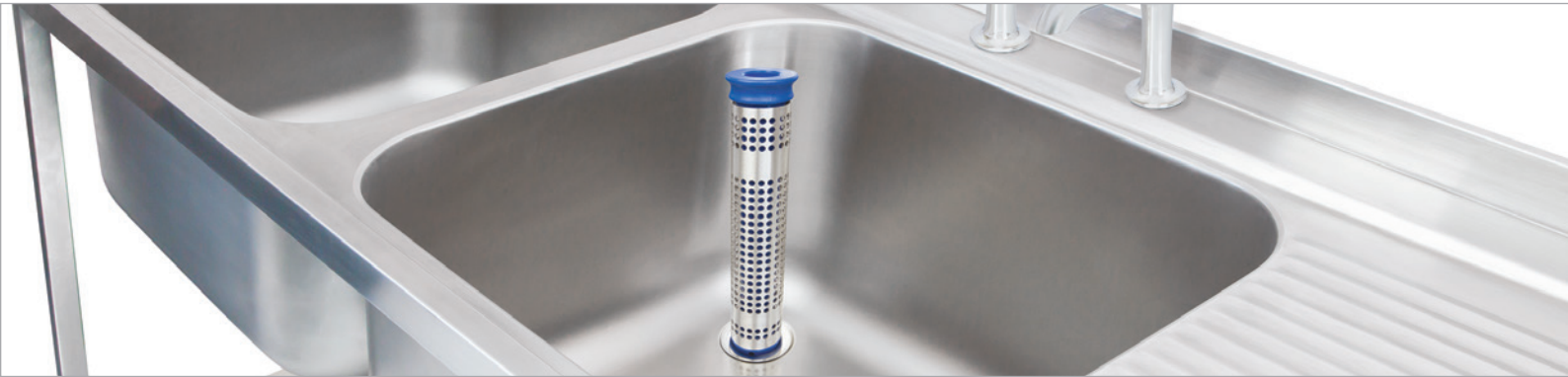


Sink Unit Assemblies	3
Sink Bowls	7
Wash Basins	9
Janitorial	13
Taps	15
Pre-Rinse Sprays	21
Sink Accessories	27
Hoses	29
Canopy Hood Accessories	31
Front of House	35
Castors, Legs & Feet	43

@ Die-Pat Divisions Ltd. 2018

Whilst every effort has been made to ensure that all images and graphical representations of products and/or descriptions of products correspond to the actual products, Die-Pat Divisions Ltd is not responsible for any variations from these descriptions. This catalogue may not be reproduced in any form or by any means in whole or in part, without the written consent of Die-Pat Divisions Ltd. Die-Pat Divisions Ltd reserves the right to make any changes and to discontinue any of its products without notice.

SINK UNIT ASSEMBLIES



Manufactured from high grade stainless steel, our extensive range of commercial catering sinks are available from stock for next-day delivery.

Standard lengths offered from 1000mm to 2400mm with a wide variety of drainer and bowl configurations. All units are supplied flat-pack with full instructions for easy self-assembly and adjustable feet for on-site levelling.

Variations on standard sizing are available on request, so if you can't see the specific unit you require, please contact our sales office on 01327 31144 for more information.

Please see pages 15-20 or visit www.die-pat.co.uk for our comprehensive range of taps.

Sink Unit Assemblies



Single Bowl / Single Drainer Sink Unit Assembly | 1000 mm

Flat pack 304 stainless steel sink unit with under-shelf. Supplied with full instructions for easy self-assembly and adjustable feet for on-site levelling. Two tap holes centrally located in the bowl. Height range: 879-910mm. Bowl: 400 x 400 x 300mm.



Single Bowl / Single Drainer Sink Unit Assembly | 1200 mm

Flat pack 304 stainless steel sink unit with under-shelf. Supplied with full instructions for easy self-assembly and adjustable feet for on-site levelling. Two tap holes centrally located in the bowl. Height range: 879-910mm. Bowl: 400 x 400 x 300mm.

CODE	L x D x H mm	BOWL / DRAINER	DRAINER	BOWL SIZE mm	TAP HOLE DIA. / HOLE CTR. mm
SA/SB10-60-44-SDLH	1000 x 600 x 900	Single Bowl / Single Drainer	LH	1 x 400 x 400 x 300 deep	22 / 180
SA/SB10-60-44-SDRH	1000 x 600 x 900	Single Bowl / Single Drainer	RH	1 x 400 x 400 x 300 deep	22 / 180
SA/SB12-60-44-SDLH	1200 x 600 x 900	Single Bowl / Single Drainer	LH	1 x 400 x 400 x 300 deep	22 / 180
SA/SB12-60-44-SDRH	1200 x 600 x 900	Single Bowl / Single Drainer	RH	1 x 400 x 400 x 300 deep	22 / 180



Single Bowl / Double Drainer Sink Unit Assembly | 1500 mm

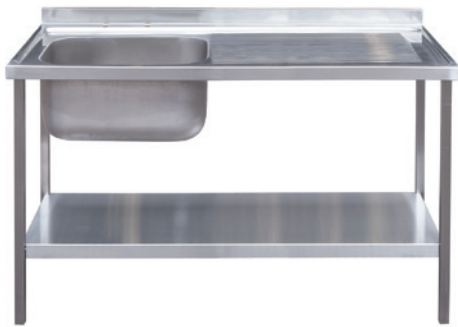
Flat pack 304 stainless steel sink unit with under-shelf. Supplied with full instructions for easy self-assembly and adjustable feet for on-site levelling. Two tap holes centrally located in the bowl. Height range: 879-910mm. Bowl: 500 x 400 x 300mm.



Double Bowl / Single Drainer Sink Unit Assembly | 1500 mm

Flat pack 304 stainless steel sink unit with under-shelf. Supplied with full instructions for easy self-assembly and adjustable feet for on-site levelling. Two sets of 2 tap holes centrally located in each bowl. Height range: 879-910mm. Bowls: 400 x 400 x 300mm | 500 x 400 x 300mm.

CODE	L x D x H mm	BOWL / DRAINER	DRAINER	BOWL SIZE mm	TAP HOLE DIA. / HOLE CTR. mm
SA/SB15-60-54-DD	1500 x 600 x 900	Single Bowl / Double Drainer	LH & RH	1 x 500 x 400 x 300 deep	22 / 180
SA/DB15-60-44-SDLH	1500 x 600 x 900	Double Bowl / Single Drainer	LH	2 x 400 x 400 x 300 deep	22 / 180
SA/DB15-60-44-SDRH	1500 x 600 x 900	Double Bowl / Single Drainer	RH	2 x 400 x 400 x 300 deep	22 / 180
SA/DB15-60-54-SDLH	1500 x 600 x 900	Double Bowl / Single Drainer	LH	2 x 500 x 400 x 300 deep	22 / 180
SA/DB15-60-54-SDRH	1500 x 600 x 900	Double Bowl / Single Drainer	RH	2 x 500 x 400 x 300 deep	22 / 180



Single Bowl / Single Drainer Sink Unit Assembly | 1200 mm

Flat pack 304 stainless steel sink unit with under-shelf. Supplied with full instructions for easy self-assembly and adjustable feet for on-site levelling. Two tap holes centrally located in the bowl. Height range: 879-910mm. Bowl: 600 x 500 x 300mm.



Single Bowl / Single Drainer Sink Unit Assembly | 1500 mm

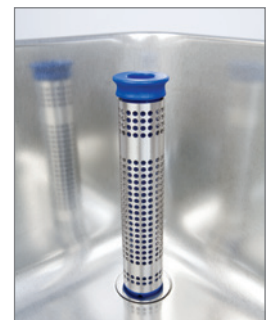
Flat pack 304 stainless steel sink unit with under-shelf. Supplied with full instructions for easy self-assembly and adjustable feet for on-site levelling. Two tap holes centrally located in the bowl. Height range: 879-910mm. Bowl: 600 x 500 x 300mm.

CODE	L x D x H mm	BOWL / DRAINER	DRAINER	BOWL SIZE mm	TAP HOLE DIA. / HOLE CTR. mm
SA/SB12-65-65-SDLH	1200 x 650 x 900	Single Bowl / Single Drainer	LH	1 x 600 x 500 x 300 deep	22 / 180
SA/SB12-65-65-SDRH	1200 x 650 x 900	Single Bowl / Single Drainer	RH	1 x 600 x 500 x 300 deep	22 / 180
SA/SB15-65-65-SDLH	1500 x 650 x 900	Single Bowl / Single Drainer	LH	1 x 600 x 500 x 300 deep	22 / 180
SA/SB15-65-65-SDRH	1500 x 650 x 900	Single Bowl / Single Drainer	RH	1 x 600 x 500 x 300 deep	22 / 180

Standpipe Strainer & Waste Kit | Stainless Steel

Perforated stainless steel strainers with plastic inner, complete with stainless steel waste to suit 1-1/2" BSP angled European waste hole. Bowl depth: 250mm (10") | 300mm (12") | 380mm (14")

CODE	MODEL	DEPTH mm
EURO-SS-10	Strainer & Waste Kit to suit bowl	250
EURO-SS-12	Strainer & Waste Kit to suit bowl	300
EURO-SS-14	Strainer & Waste Kit to suit bowl	380





Single Bowl / Double Drainer Sink Unit Assembly | 1800 mm

Flat pack 304 stainless steel sink unit with under-shelf. Supplied with full instructions for easy self-assembly and adjustable feet for on-site levelling. Two tap holes centrally located in the bowl. Height range: 879-910mm. Bowl: 600 x 500 x 300mm.



Double Bowl / Single Drainer Sink Unit Assembly | 1800 mm

Flat pack 304 stainless steel sink unit with under-shelf. Supplied with full instructions for easy self-assembly and adjustable feet for on-site levelling. Two sets of 2 tap holes centrally located in each bowl. Height range: 879-910mm. Bowls: 600 x 500 x 300mm.

CODE	L x D x H mm	BOWL / DRAINER	DRAINER	BOWL SIZE mm	TAP HOLE DIA. / HOLE CTR. mm
SA/SB18-65-65-DD	1800 x 650 x 900	Single Bowl / Double Drainer	LH & RH	1 x 600 x 500 x 300 deep	22 / 180
SA/DB18-65-65-SDLH	1800 x 650 x 900	Double Bowl / Single Drainer	LH	2 x 600 x 500 x 300 deep	22 / 180
SA/DB18-65-65-SDRH	1800 x 650 x 900	Double Bowl / Single Drainer	RH	2 x 600 x 500 x 300 deep	22 / 180



Double Bowl / Double Drainer Sink Unit Assembly | 2400 mm

Flat pack 304 stainless steel sink unit with under-shelf. Supplied with full instructions for easy self-assembly and adjustable feet for on-site levelling. Two sets of 2 tap holes centrally located in each bowl. Height range: 879-910mm. Bowls: 600 x 500 x 300mm.

CODE	L x D x H mm	BOWL / DRAINER	DRAINER	BOWL SIZE mm	TAP HOLE DIA. / HOLE CTR. mm
SA/DB24-65-65-DD	2400 x 650 x 900	Double Bowl / Double Drainer	LH & RH	2 x 600 x 500 x 300 deep	22 / 180

Standpipe Strainer & Waste Kit | Chrome Plated

Perforated stainless steel strainers with plastic inner, complete with chrome plated waste to suit 1-1/2" BSP angled European waste hole. Bowl depth: 250mm (10") | 300mm (12") | 380mm (14")

CODE	MODEL	DEPTH mm
EURO-CP-10	Strainer & Waste Kit to suit bowl	250
EURO-CP-12	Strainer & Waste Kit to suit bowl	300
EURO-CP-14	Strainer & Waste Kit to suit bowl	380



Notes...

Notes

Please order by 4pm for next-day delivery. Timed and special deliveries can also be arranged.

SINK BOWLS



Commercial weld-in and inset sink bowls manufactured from 304 stainless steel. Offered in a range of sizes from our extensive stock for next-day delivery.

Please see pages 15-20 or visit www.die-pat.co.uk for our comprehensive range of taps.

Sink Bowls



Kit Bowls | Flat Flange

Sink bowls made from 1mm thick stainless steel with a polished finish. Flat flange for weld-in or inset installation. All bowls supplied complete with VASF waste and overflow. Left or right hand waste hole options available.

CODE	BOWL SIZE mm	WASTE HOLE OPTION
KIT252520P	250 x 250 x 200 deep	
KIT294020P	290 x 400 x 200 deep	
KIT333320P	330 x 330 x 200 deep	
KIT403420P	400 x 340 x 200 deep	RH / LH
KIT403425P	400 x 340 x 250 deep	RH / LH
KIT404020P	400 x 400 x 200 deep	RH / LH
KIT454520P	450 x 450 x 200 deep	
KIT504030P/WOH	500 x 400 x 300 deep	RH / LH

EURO Bowls | Flat Flange

Sink bowls made from 1mm thick stainless steel with a polished finish. Flat flange for weld-in or inset installation. All bowls supplied complete with waste & strainer. Left or right hand waste hole options available.

CODE	BOWL SIZE mm	WASTE HOLE OPTION
EURO-40-10-SS	400 x 400 x 250 deep	
EURO-40-12-SS	400 x 400 x 300 deep	
EURO-50-10-SS	500 x 400 x 250 deep	RH / LH
EURO-50-12-SS	500 x 400 x 300 deep	RH / LH
EURO-60-10-SS	600 x 450 x 250 deep	RH / LH
EURO-60-12-SS	600 x 450 x 300 deep	RH / LH



Inset Bowls | No Studs

Sink bowls made from 1 mm thick stainless steel with a polished finish and inset lip. All bowls supplied complete with VASF waste and overflow.

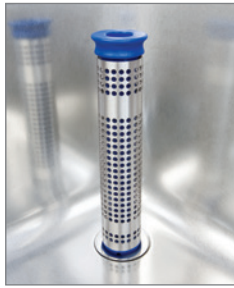
CODE	BOWL SIZE mm
VDI3320	330 x 330 x 200 deep
VDI4030	400 x 400 x 300 deep



Waste & Overflow Kit

Commercial sink bowl waste kit for slotted overflow.

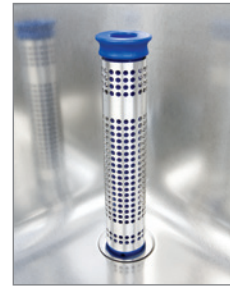
CODE	ITEM
VASF	1-1/2" waste kit for slotted overflow



Standpipe Strainer & Waste Kit | Stainless Steel

Perforated stainless steel strainers with plastic inner, complete with stainless steel waste to suit 1-1/2" BSP angled European waste hole. Waste flange: 72mm. Bowl depth: 250mm (10") | 300mm (12") | 380mm (14")

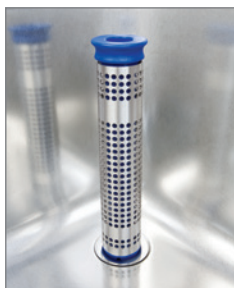
CODE	MODEL	DEPTH mm
EURO-SS-10	Strainer & Waste Kit to suit bowl	250
EURO-SS-12	Strainer & Waste Kit to suit bowl	300
EURO-SS-14	Strainer & Waste Kit to suit bowl	380



Standpipe Strainer & Waste Kit | Chrome Plated

Perforated stainless steel strainers with plastic inner, complete with chrome plated waste to suit 1-1/2" BSP angled European waste hole. Waste flange: 72mm. Bowl depth: 250mm (10") | 300mm (12") | 380mm (14")

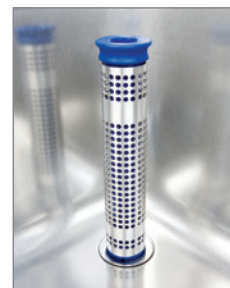
CODE	MODEL	DEPTH mm
EURO-CP-10	Strainer & Waste Kit to suit bowl	250
EURO-CP-12	Strainer & Waste Kit to suit bowl	300
EURO-CP-14	Strainer & Waste Kit to suit bowl	380



Standpipe Strainer & Waste Kit | Stainless Steel

Perforated stainless steel strainers with plastic inner, complete with stainless steel waste to suit 1-1/2" BSP flat flange waste hole. Waste flange: 89mm. Bowl depth: 250mm (10") | 300mm (12") | 380mm (14")

CODE	MODEL	DEPTH mm
BRIT-SS-10	Strainer & Waste Kit to suit bowl	250
BRIT-SS-12	Strainer & Waste Kit to suit bowl	300
BRIT-SS-14	Strainer & Waste Kit to suit bowl	380



Standpipe Strainer & Waste Kit | Chrome Plated

Perforated stainless steel strainers with plastic inner, complete with chrome plated waste to suit 1-1/2" BSP flat flange waste hole. Waste flange: 89mm. Bowl depth: 250mm (10") | 300mm (12") | 380mm (14")

CODE	MODEL	DEPTH mm
BRIT-CP-10	Strainer & Waste Kit to suit bowl	250
BRIT-CP-12	Strainer & Waste Kit to suit bowl	300
BRIT-CP-14	Strainer & Waste Kit to suit bowl	380

WASH BASINS



Our extensive range of superior finish 304 stainless steel wash hand basins are supplied direct from stock for next-day delivery.

Multiple options available providing you with a comprehensive choice; wall mounted, corner, inset or knee operated, all are supplied complete with combined overflow waste kit. Wall mounted units are manufactured with keyhole slots for easy on-site installation.

Please see pages 15-20 or visit www.die-pat.co.uk for our comprehensive range of taps.

Inset Wash Basins



Inset Wash Basin | Polished

Commercial wash basin made from 1.2mm stainless steel, with inset rim. Supplied complete with a FW1PC combined 32mm waste and overflow kit.

CODE	BOWL DIA. x DEPTH mm
HB230R	230 x 160
HB260R	260 x 160
HB300R	290 x 160

Inset Wash Basin c/w Studs | Polished

Commercial wash basin made from 1.2mm stainless steel, with inset rim and complete with studs. Supplied complete with a FW1PC combined 32mm waste and overflow kit.

CODE	BOWL DIA. x DEPTH mm	TAP HOLES	TAP HOLE DIA. mm
HB300R/I	290 x 160	0	22
HB320I	290 x 160	2	22
HB290I	290 x 160	1	22



Round Inset Wash Basin | Polished

Commercial wash basin with inset rim and three stud fixings. Supplied complete with a SR1 waste kit.

CODE	INT. DIA. x DEPTH mm	FLANGE DIA. mm	FIXINGS
VR30i	300 x 180	394	Three stud fixing. No ribs in base
VR38i	380 x 170	414	
VR42i	420 x 170	454	

Waste & Overflow Kits

Combined waste and overflow packs to suit inset wash hand basins.

CODE	ITEM
FVW1PC	32mm waste & overflow pack suitable for HB260R, HB300R, HB290S, HB430S, HBCW
SR1	Combined 32mm waste & overflow pack suitable for VR30i, VR38i, VR42i

Wall Mounted Wash Basins

These commercial wash basins are fully spot welded including apron to save installation time on site.



Wall Mounted Wash Basins

CODE	ITEM	WIDTH x DEPTH x HEIGHT mm	TAP HOLES	BOWL SIZE mm	UPSTAND mm	OVERFLOW
HB240S	A	295 x 290 x 135	2	240 dia. x 105 deep	25	No
HB290S	B	340 x 345 x 160	2	290 dia. x 160 deep	25	Yes
HB320S	C	400 x 350 x 105	2	320 dia. x 105 deep	25	Yes
HB430S	D	485 x 360 x 150	2	430 x 280 x 150 deep	25	Yes
HBCW	E – Corner basin	300 x 300 x 150	2	245 dia. x 125 deep	25	Yes
HB335EURO	G	400 x 342 x 230	2	335 x 225 x 263 deep	40	Yes
HB430EURO	F	480 x 350 x 263	2	430 x 235 x 185 deep	40	Yes
HB335EURONS	H – No skirt	383 x 300 x 185	2	335 x 225 x 120 deep	60	Yes
HBBP	Blanking plate	45mm dia.				

Wall Mounted / Knee Operated Wash Basins

Wall mounted stainless steel wash hand basins complete with integral skirt, knee operated mixing valve, single inlet spout and hoses. A soap dispenser can be fitted or a stainless steel blanking plate supplied. This unit is fitted to the wall by keyhole slots on the back and comes complete with combined overflow waste kit. Satin finish. Please see soap dispensers on page 12.



Wall Mounted Wash Basins | Knee Operated

CODE	ITEM	WIDTH x DEPTH x HEIGHT mm	UPSTAND mm	BOWL SIZE mm
HB335EUROKV	Wall mounted, Knee operated Wash Basin	400 x 342 x 230	40	335 x 225
HB430EUROKV	Wall mounted, Knee operated Wash Basin	480 x 350 x 263	40	430 x 235



Compact, Wall Mounted, Knee Operated Wash Basins | 300 mm

CODE	ITEM	WIDTH x DEPTH mm	SPLASHBACK mm	BOWL SIZE DIA. mm
HB300PFB	Compact, knee operated	300 x 315	300 x 315	255 x 110
HB300PFB-NSB	Compact, knee operated – no splashback	300 x 315	50mm upstand	255 x 110
HB300PFB-WRAS	Compact, knee operated – WRAS approved	300 x 315	300 x 315	255 x 110
HB300PFB-WRASNSB	Compact, knee operated – WRAS approved, no splashback	300 x 315	50mm upstand	255 x 110



For Soap Dispensers and Blanking Plates please see page 12.

Accessories



Soap Dispensers

CODE	ITEM	CONTAINER HEIGHT mm	TOTAL HEIGHT mm	CONTAINER DIA. mm
DPSD-1000	Soap Dispenser – Economy	154	262	55
DPSD-2000	Soap Dispenser – Premium	212	390	90

Blanking Plate

HBBP	Blanking plate – 45mm dia.
------	----------------------------

Basin Taps



Basin Taps with Cross heads | 1/2"



CODE	ITEM
1000/D	1/2" Chrome plated basin taps w/ cross heads – WRAS approved



Basin Taps with Tricon heads | 1/2"



CODE	ITEM
4100/D	1/2" Chrome plated basin taps w/ tricon heads – WRAS approved



Basin Taps with Levers | 1/2"



CODE	ITEM
1100/D	1/2" Chrome plated basin taps w/ 3" levers – WRAS approved
1100/6/D	1/2" Chrome plated basin taps w/ 6" levers – WRAS approved



Self Closing Basin Taps | 1/2"



CODE	ITEM
CORM03/D	1/2" Chrome plated, self closing basin taps – WRAS approved

JANITORIAL



High quality grade 304 stainless steel.

Janitorial Units



Janitorial Sink Unit | 600 & 700 mm

Stainless steel janitorial sink unit with adjustable feet. Supplied complete with tap, waste kit, flexible hose fittings, grate & wall bracket.

CODE	ITEM	LENGTH x DEPTH x HEIGHT mm
DP0039	Janitorial Sink	500 x 600 x 850
DP0040	Janitorial Sink	500 x 700 x 850



Bucket Sink | 520 mm

Stainless steel bucket sink with adjustable feet. Waste, splash back and grid included.

CODE	ITEM	LENGTH x DEPTH x HEIGHT mm
DPBS50	Bucket Sink	500 x 520 x 816



Bib Taps with Cross Heads | 1/2"



CODE	ITEM
CHN40/D	Pair of 1/2" Bib taps with cross heads – WRAS Approved
CHN40EXT	Extension kit for CHN40/D – 50mm long

Insectocutors

We offer a range of insectocutors successfully combining contemporary design with high specification features, ideal for commercial environments. The insectocutors are available in a range of white, stainless steel or aluminium finishes with a choice of 16w and 30w models.

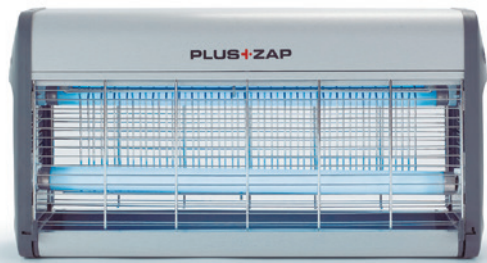
Staggered tubes create efficient light output, whilst the innovative offset killing grid creates a large, effective catch area with easier servicing. Tool free tube removal for a quick and simple service. Mains interlocked catch tray is simple to remove for quick and safe maintenance, with anti-blow out folds. Flexible mounting options for wall, desk or ceiling suspension.



Insectocutors – Premium range | 16 & 30 watt

CODE	ITEM	H x W x D mm	COVERAGE m ²	TUBES	MATERIAL	WEIGHT kg
DPFK126	Insectocutor – Premium 16 watt	262 x 365 x 130	40	2 x TVX8-12	Stainless steel	3
DPFK127	Insectocutor – Premium 30 watt	262 x 514 x 130	80	2 x TVX15-18	Stainless steel	3.5

2 year warranty **excluding tubes and starters which should be replaced every year**



Insectocutors – Economy range | 16 & 30 watt

CODE	ITEM	H x W x D mm	COVERAGE m ²	TUBES	MATERIAL	WEIGHT kg
DPFK121	Insectocutor – Economy 16 watt	262 x 365 x 130	40	2 x TVX8-12	Aluminium	2.3
DPFK122	Insectocutor – Economy 30 watt	262 x 514 x 130	80	2 x TVX15-18	Aluminium	2.5
DPFK123	Insectocutor – Economy 16 watt	262 x 365 x 130	40	2 x TVX8-12	Mild steel – White powder coated	3



TAPS



A comprehensive range of taps available from our UK warehouse for next-day delivery. From pillar, mixer and crosshead taps to gooseneck pantry or electronic basin taps we have options to suit your every requirement.

The following pages only show a selection of the taps we can offer, so If you cannot see your required item listed please visit www.die-pat.co.uk or call us on 01327 311144 and we will be happy to assist.

Basin Taps



Basin Taps with Cross heads | 1/2"



CODE	ITEM
1000/D	1/2" Chrome plated basin taps w/ cross heads – WRAS approved



Basin Taps with Tricon heads | 1/2"



CODE	ITEM
4100/D	1/2" Chrome plated basin taps w/ Tricon heads – WRAS approved



Basin Taps with Levers | 1/2"



CODE	ITEM
1100/D	1/2" Chrome plated basin taps w/ 3" Levers – WRAS approved
1100/6/D	1/2" Chrome plated basin taps w/ 6" Levers – WRAS approved



Self Closing Basin Taps | 1/2"



CODE	ITEM
CORM03/D	1/2" Chrome plated, self closing basin taps – WRAS approved

Electronic Tap

This electronic water saving tap has a microcomputer control to enable an automatic on/off motion with a 1 second time delay. The tap comes with deck mounted fittings only and is manufactured from brass with chrome plating.



CODE	ITEM
DPMS42D	Electronic Deck Mounted Tap
DPMS42D/KIT	Electronic Deck Mounted Tap with Mixer Valve
DPGR100	Mixer Valve

FEATURES

- Hands free and Hygienic
- Water saving
- Infrared sensor
- Microcomputer control
- Automatic on/off switch
- 1 second time delay
- Brass with chrome plate construction
- Non-adjustable for rate at 6.5L/min at 0.1 Mpa
- Battery powered - uses 4 x AA batteries (not included)



Catering Sink Taps – Deck Mounted



High Neck Pillar Tap with Cross Heads | 3/4" | Hot

CODE	ITEM
2010/01H	3/4" High neck pillar tap – Hot Not WRAS approved



High Neck Pillar Tap with Cross Heads | 3/4" | Cold

CODE	ITEM
2010/01C	3/4" High neck pillar tap – Cold Not WRAS approved



Basin Pillar Taps with Cross heads | 1/2"



CODE	ITEM
2000/D	1/2" Pillar taps with cross heads – WRAS approved



Basin Pillar Taps with Tricon heads | 1/2"



CODE	ITEM
4000/D	1/2" Pillar taps with tricon heads – WRAS approved



Basin Pillar Taps with 3" & 6" Levers | 1/2"



CODE	ITEM
2100/D	1/2" Pillar taps with 3" levers – WRAS approved
2200/D	1/2" Pillar taps with 6" levers – WRAS approved



Mixer Tap with Cross Heads | 1/2" | Bi-flow



Tap holes: 22mm

CODE	ITEM
3007/D	1/2" mixer tap with cross heads – 7" bi-flow swivel spout



Mixer Tap with Tricon Heads | 1/2" | Bi-flow



Tap holes: 22mm

CODE	ITEM
4200/D	1/2" mixer tap with tricon heads – 8" bi-flow swivel spout



Mixer Tap with 3" & 6" Levers | 1/2" | Bi-flow



Tap holes: 22mm

CODE	ITEM
6100/D	1/2" mixer tap with 3" levers – 7" bi-flow swivel spout
6100/6/D	1/2" mixer tap with 6" levers – 7" bi-flow swivel spout



Monobloc Mixer Tap with Tricon Heads | 1/2" | Bi-flow



Tap hole: 32mm

CODE	ITEM
4500/D	Monobloc mixer tap w/ tricon heads – 8" bi-flow swivel spout



Monobloc Mixer Tap with 3" Levers | 1/2" | Bi-flow

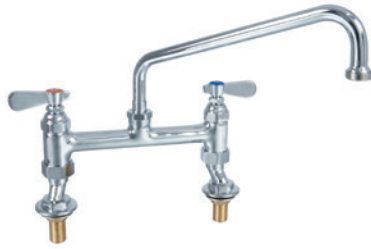


Tap hole: 32mm

CODE	ITEM
6500/D	Monobloc mixer tap w/ 3" levers – 8" bi-flow swivel spout

Pantry Taps – Deck Mounted

Taps



Pantry Tap with Swing Spout | 6", 8", 10" & 12"

Centres: 180-200mm

CODE	ITEM
DP617006	Double deck mounted pantry tap – 6" swing spout
DP617008	Double deck mounted pantry tap – 8" swing spout
DP617010	Double deck mounted pantry tap – 10" swing spout
DP617012	Double deck mounted pantry tap – 12" swing spout



Pantry Tap with Gooseneck Spout | 6" & 8"

Centres: 180-200mm

CODE	ITEM
DP617001	Double deck mounted pantry tap – 8" gooseneck spout
DP617002	Double deck mounted pantry tap – 6" gooseneck spout



Pantry Tap with Double Jointed Spout

Centres: 180-200mm

CODE	ITEM
DP617024	Double deck mounted – 24" double jointed spout



Monobloc Pantry Tap with Double Jointed Spout

Tap hole: 32mm

CODE	ITEM
DP519024	Deck mounted monobloc – 24" double jointed spout



Monobloc Pantry Tap with Swing Spout | 6", 8", 10" & 12"

Tap hole: 32mm

CODE	ITEM
DP519006	Deck mounted monobloc pantry tap – 6" swing spout
DP519008	Deck mounted monobloc pantry tap – 8" swing spout
DP519010	Deck mounted monobloc pantry tap – 10" swing spout
DP519012	Deck mounted monobloc pantry tap – 12" swing spout



Monobloc Pantry Tap with Gooseneck Spout | 6" & 8"

Tap hole: 32mm

CODE	ITEM
DP519001	Deck mounted monobloc pantry tap – 8" gooseneck spout
DP519002	Deck mounted monobloc pantry tap – 6" gooseneck spout



Sink Mixer Tap with 3" Levers | Divided Flow



Centres: 160-240mm

CODE	ITEM
6400/3/D	Sink mixer tap with 3" levers – Divided flow swivel spout



Sink Mixer Tap with 6" Levers | Divided Flow



Centres: 160-240mm

CODE	ITEM
6400/6/D	Sink mixer tap with 6" levers – Divided flow swivel spout



Single Monobloc Pantry Tap with Swing Spout | 6", 8", 10" & 12"

Tap hole: 32mm

CODE	ITEM
DP649006	Single, deck mounted monobloc tap – 6" swing spout
DP649008	Single, deck mounted monobloc tap – 8" swing spout
DP649010	Single, deck mounted monobloc tap – 10" swing spout
DP649012	Single, deck mounted monobloc tap – 12" swing spout



Fixed Spout

CODE	ITEM
DP11X120	Fixed spout

Bubbler Tap



Bubbler Tap

Hole in deck: 32mm



CODE	ITEM
DPWB	Water bubbler – WRAS approved

Bottle Filler



Bottle Filler



CODE	ITEM
DPBF	Bottle filler – WRAS approved

Soap Dispensers

Taps



Soap Dispensers

CODE	ITEM	CONTAINER HEIGHT mm	TOTAL HEIGHT mm	CONTAINER DIA. mm
DPSD-1000	Soap Dispenser – Economy	154	262	55
DPSD-2000	Soap Dispenser – Premium	212	390	90

Tap Parts



Connectors

CODE	ITEM
DP50X123	Wall mounted connector
DP50X125	Deck mounted connector



Gooseneck Swing Spout | 6" & 8"

CODE	ITEM	SPREAD mm	HEIGHT mm
DP11X2	Gooseneck spout – 6"	150	264
DP11X1	Gooseneck spout – 8"	200	290



Swing Spout | 6", 8", 10" & 12"

CODE	ITEM	LENGTH mm
DP11X6	Swing spout – 6"	152
DP11X8	Swing spout – 8"	203
DP11X10	Swing spout – 10"	254
DP11X12	Swing spout – 12"	305



Double Jointed Swing Spout | 24"

CODE	ITEM	LENGTH mm
DP009DJ	Double jointed swing spout – 24"	610

PRE-RINSE SPRAYS



H2O WRAS approved pre-rinse units are heavy duty and suitable for all commercial kitchen environments. Straight arm, flexible hose and mini units are held in stock in a variety of options, with accessories and add-on taps also available.

Pre-Rinse Units



Pre-Rinse Unit with Flexible Hose | Monobloc

Pre-Rinse units are supplied with a wall bracket. Accessories and add-on taps are available for all units. The add-on tap shown is sold separately.

CODE	ITEM
DP501BR	Pre-Rinse unit with flexible hose – Monobloc

Pre-Rinse Unit with Flexible Hose | Double Wall Mounted

Pre-Rinse units are supplied with a wall bracket. Accessories and add-on taps are available for all units. The add-on tap shown is sold separately.

CODE	ITEM
DP531BR	Pre-Rinse unit with flexible hose – Double wall mounted



Pre-Rinse Unit with Flexible Hose | Double Deck Mounted

Pre-Rinse units are supplied with a wall bracket. Accessories and add-on taps are available for all units. The add-on tap shown is sold separately.

CODE	ITEM
DP601BR	Pre-Rinse unit with flexible hose – Double deck mounted



Pre-Rinse Unit with Flexible Hose | Single Deck Mounted

Pre-Rinse units are supplied with a wall bracket. Accessories and add-on taps are available for all units. The add-on tap shown is sold separately.

CODE	ITEM
DP631BR	Pre-Rinse unit with flexible hose – Single deck mounted



MINI Pre-Rinse Unit with Flexible Hose | Deck Mounted

The H2O MINI Pre-Rinse unit provides the same flexibility and performance as the standard Pre-Rinse unit, but is suitable when space or height restrictions apply. The unit is supplied with an add-on tap and 6" swing nozzle.

CODE	ITEM
DP50MN-2	MINI Pre-Rinse unit with flexible hose – Monobloc



MINI Pre-Rinse Unit with Flexible Hose | Double Deck Mounted

The H2O MINI Pre-Rinse unit provides the same flexibility and performance as the standard Pre-Rinse unit, but is suitable when space or height restrictions apply. The unit is supplied with an add-on tap and 6" swing nozzle.

CODE	ITEM
DP60MN-2	MINI Pre-Rinse unit with flexible hose – Double deck mounted



Pre-Rinse Unit with Flexible Hose | Single Wall Mounted

Pre-Rinse units are supplied with a wall bracket. Accessories and add-on taps are available for all units. The add-on tap shown is sold separately.

CODE	ITEM
DP691BR	Pre-Rinse unit with flexible hose – Single wall mounted

Pre-Rinse Unit Add-on Bowl Filler tap | 6", 8" & 12"

CODE	ITEM
DP557006	Pre-Rinse unit add-on bowl filler tap – 6"
DP557008	Pre-Rinse unit add-on bowl filler tap – 8"
DP557012	Pre-Rinse unit add-on bowl filler tap – 12"



Pre-Rinse Unit Spray Gun

CODE	ITEM
DP50Y2	Pre-Rinse spray gun

Pre-Rinse Unit Spray Gun Repair Kit

CODE	ITEM
DP5002	Pre-Rinse spray gun repair kit



Pre-Rinse Unit Wall Bracket | 6" & 12"

CODE	ITEM
DP50Y20	Pre-Rinse wall bracket – 6"
DP50Y020	Pre-Rinse wall bracket – 12"



Pre-Rinse Unit Riser Pipe with Wall Hook | 18"

CODE	ITEM
DP50X77	Pre-Rinse riser pipe with wall hook – 18"



Pre-Rinse Unit Hose with Grip

CODE	ITEM
DP50Y004	Pre-Rinse unit stainless steel hose with grip – 44"
DP50Y10	Pre-Rinse unit stainless steel hose – No grip – 38"



Pre-Rinse Unit Plastic Hose Grip

CODE	ITEM
DP50X25	Pre-Rinse unit plastic grip



Pre-Rinse Unit Spring Retainer & Spring

CODE	ITEM
DP50X32	Pre-Rinse unit spring retainer
DP50X33	Pre-Rinse unit spring



Pre-Rinse Unit Valve Replacement Kit

CODE	ITEM
DP50Y67	Pre-Rinse unit valve replacement kit

Please order by 4pm for next-day delivery. Timed and special deliveries can also be arranged.

KLARCO Retractable Hose Reel Units

MAXI Reel with NITO-2 Combi spray gun

A professional spray gun ("ECO/R" or alternatively an extended spray gun), connected to a retractable (food service approved) rubber hose. The shell, mounting flanges and screws are stainless steel (AISI304). Designed for easy installation, saving space and guaranteeing maximum hygiene. An ideal accessory for cleaning large kitchens or food service rooms; supermarkets, butchers etc. Available as standard with a 15 metre hose. Other sizes available, please call our sales office on 01327 311144.

TECHNICAL FEATURES

- Max. operating temperature: 60°C
- Max. operating pressure: 850 kPa (8.5 Bar)
- Water output at 300 kPa: 12 litres/min
- M15 weight: 18kg (approx.)



NITO-2 Combi Spray Gun with Adjustable Spray | Heavy Duty

Heavy duty spray gun for industrial cleaning. Adjustable spray, from narrow jet to 60° wide. Trigger with safety lock to prevent accidental spraying. Heat insulated handle. 1/2" female threaded inlet. Max water temp: 90°C. Max pressure: 1 MPa (145 psi).

CODE	ITEM
OR.P449.00.00	NITO-2 Combi spray gun



Nozzle Extension for NITO Spray Guns | 45 cm

45cm Nozzle extension for NITO Spray guns. Interchangeable with NITO-1 and NITO-2 spray nozzles.

CODE	ITEM
OR.P148.00.00	Nozzle extension for NITO-1 & NITO-2 Spray guns



M15 MAXI Reel with NITO-2 Combi Spray Gun | 15m Hose

Retractable swivel hose reel unit for wall or ceiling mounting.

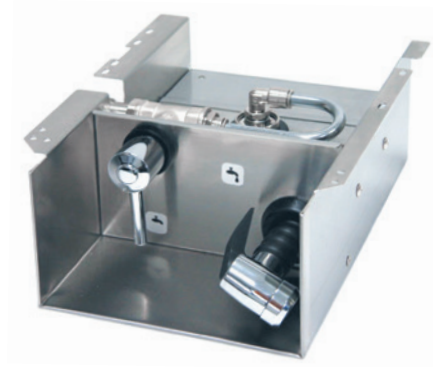
CODE	ITEM
5R.M15.449	M15 Maxi reel with NITO-2 combi spray gun
5R.M15.480	M15 Maxi reel with NITO-2 combi spray gun & jet extension

MINI Reel Retractable Hose Units

A professional spray gun ('ECO/R' with 3/8" Female inlet), connected to a 150cm long retractable (food service approved) rubber hose with a 1/4 inch stop valve. Cased inside a stainless steel (AISI304) shell. Designed for easy installation, saving space and guaranteeing maximum hygiene.

TECHNICAL FEATURES

- Max. operating temperature: 90°C
- Max. operating pressure: 600 kPa (6 Bar)
- Water output at 300 kPa: 8 litres/min
- M15 weight: 3kg (approx.)



MINI Reel Retractable Hose Unit | Standard

Retractable hose unit for under sink and combi ovens.

CODE	ITEM
MOD9200000	Mini Reel retractable hose unit – Standard model

MINI Reel Retractable Hose Unit | Protected

Retractable hose unit for under sink and combi ovens.

CODE	ITEM
MOD9200100	Mini Reel retractable hose unit – Protected model



New ECO/R Spray Gun

ECO/R Handshower made entirely from materials suitable for contact with drinking water. Ergonomic design and progressive water flow. Water hammer-proof valve. Available with push-button control. 3/8" female threaded inlet. Max water temp: 65°C. Max pressure: 0.65 MPa (94 psi).

CODE	ITEM
OR.P043.00.00	ECO/R spray gun with 3/8" female inlet



NITO-1 Combi Spray Gun with Adjustable Spray | Light

Light spray gun for industrial cleaning. Adjustable spray, interchangeable with extension. Ergonomic design. G 1/2" female threaded inlet. Max water temp: 40°C. Max pressure: 0.6 MPa (87 psi).

CODE	ITEM
OR.P146.00.00	NITO-1 Combi spray gun with 1/2" female inlet

Please order by 4pm for next-day delivery. Timed and special deliveries can also be arranged.

SINK ACCESSORIES



Die-Pat's range of polypropylene sink accessories includes self-closing waste valves, inlet tubes, bottle traps, P & S traps, and space saving plumbing kits.

FEATURES

- Allows full use of storage space below sink bowls
- Universal compression outlet suits all plastic, copper and lead pipe
- Supplied with an 1-1/2" x 75mm water seal tubular swivel 'P' trap and blanking plugs
- Can accept discharge hose(s) of domestic appliances
- Manufactured in polypropylene



Sink Kit for Single Bowl Unit

Single bowl space saver plumbing kit. Supplied with an 1-1/2" x 75mm water seal tubular swivel 'P' trap and blanking plugs.

CODE	ITEM
DPSKSB	Sink kit for single bowl unit



Sink Kit for Double Bowl Unit

Double bowl space saver plumbing kit. Supplied with an 1-1/2" x 75mm water seal tubular swivel 'P' trap and blanking plugs.

CODE	ITEM
DPSKDB	Sink kit for double bowl unit



Sink Kit for Triple Bowl Unit

Triple bowl space saver plumbing kit. Supplied with an 1-1/2" x 75mm water seal tubular swivel 'P' trap and blanking plugs.

CODE	ITEM
DPSKTB	Sink kit for triple bowl unit



Self-Closing Waste Valve | 1-1/2"

Self-closing waste valve made from polypropylene. BSP female inlet nut x universal compression outlet. Can be fitted in horizontal or vertical position. Length: 153mm

CODE	ITEM
DPSCWV/1.5"	Self-closing waste valve – 1-1/2"



Space Saving Inlet Tube | 1-1/2"

Space saving trap inlet made from polypropylene. Designed to allow full use of space below the sink bowl.

CODE	ITEM
DPSSIT/1.5"	Space saving inlet tube – 1-1/2"

Traps



FEATURES

- 75mm water seal
- Silicone valve prevents foul odour or sewer gas entering the building if the water seal has evaporated which may occur due to lack of use through under occupancy
- Multifit compression outlet suits all plastic, copper & lead pipe
- Anti-syphon valve neutralises negative syphonic pressure and eliminates gurgling
- Manufactured in polypropylene

Bottle Trap with Silicone | 1-1/2"

CODE	ITEM
DPBOTTLETRAP/1.5"	Bottle trap with silicone – 1-1/2"



Adjustable 'P' Trap

75mm water seal adjustable inlet tubular swivel 'P' trap w/ multi-fit outlet. Made from polypropylene. Suitable for all plastic, copper and lead pipe.

CODE	ITEM
DPPTRAP/1.25"	Adjustable 'P' trap – 1-1/4" (32mm)
DPPTRAP/1.5"	Adjustable 'P' trap – 1-1/2" (38mm)
DPPTRAP/2"	Adjustable 'P' trap – 2" (50mm)



'S' Trap

75mm water seal tubular swivel 'S' trap with multi-fit outlet. Made from polypropylene. Suitable for all plastic, copper and lead pipe.

CODE	ITEM
DPSTRAP/1.25"	'S' trap – 1-1/4" (32mm)
DPSTRAP/1.5"	'S' trap – 1-1/2" (38mm)
DPSTRAP/2"	'S' trap – 2" (50mm)

HOSES



We offer a range of gas and water hoses certified for use in the commercial food service industry. Standard size hoses are available from stock for next-day delivery, and we also offer a bespoke hose manufacturing service to suit individual requirements.

Please contact us on 01327 311144 for more details.

Gas Hoses

Fully welded corrugated stainless-steel gas hose assemblies manufactured under rigorous controls to provide top quality and sustained reliability for the commercial food service sector. Approved for all 3 gas families in bore sizes of 1/2" and 3/4" from stock (1" bore available on request). Tested and certified in accordance with BS669 Part 2:1997. Braided and bayonet hoses available.



Yellow Gas Hose | 1000 mm, 1250 mm & 1500mm

Fully welded corrugated stainless steel hose assembly with a quick release valve coupler, which cuts off the supply of gas when disconnected.

CODE	HOSE LENGTH mm	BORE SIZE
GH12-1000	1000	1/2" QC (Quick Connect)
GH20-1000	1000	3/4" QC (Quick Connect)
GH25-1000	1000	1" QC (Quick Connect)
GH12-1250	1250	1/2" QC (Quick Connect)
GH20-1250	1250	3/4" QC (Quick Connect)
GH25-1250	1250	1" QC (Quick Connect)
GH12-1500	1500	1/2" QC (Quick Connect)
GH20-1500	1500	3/4" QC (Quick Connect)
GH25-1500	1500	1" QC (Quick Connect)

Water Hoses

We offer a choice of braided stainless or white food grade water hoses (certified to BS6920, KTW W270 and DVGW VP543 standards). Both varieties are WRAS approved and have standard sizes available from stock for next-day delivery.

We also offer a bespoke hose service to suit individual requirements which can be manufactured in 2-3 days, please contact us on 01327 311144 for more details.



Braided Water Hoses

Stainless steel braided water hoses with flat female elbow.
Bore: 13mm & 19mm

CODE	HOSE mm	ELBOW	BORE mm
WH12FFSF1.213FFFE12	1200	1/2"	13
WH12FFSF1.513FFFE12	1500	1/2"	13
WH34FFSF1.213FFFE34	1200	3/4"	13
WH34FFSF1.513FFFE34	1500	3/4"	13
WH34FFSF2.013FFFE34	2000	3/4"	13
WH34FFSF2.513FFFE34	2500	3/4"	13
WH34FFSF1.219FFFE34	1200	3/4"	19
WH34FFSF1.519FFFE34	1500	3/4"	19

White Foodgrade Aquavend Water Hoses

White foodgrade Aquavend metal water hoses with flat faced swivel female elbow. Brass end fittings. Loose EPDM washers. Bore: 12mm

CODE	HOSE mm	ELBOW	BORE mm
WHAM1.012	1000	3/4"	12
WHAM1.212	1200	3/4"	12
WHAM1.512	1500	3/4"	12
WHAM2.012	2000	3/4"	12

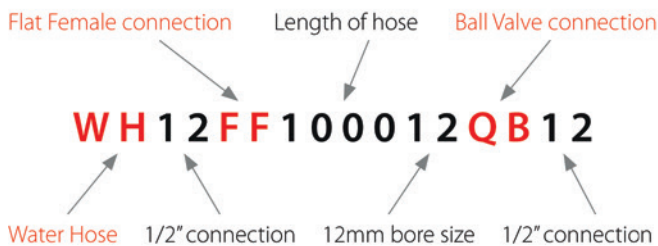
FEATURES

- Reinforced, brilliant white, smooth, kink resistant PVC hose
- Co-extruded, glossy black, hytrel liner that does not support microbiological growth
- Foodgrade hose suitable for drinks vending machines, water softeners and water filter kits
- Temperature range : 0°C to +65°C at 6bar
- Suitable for potable water
- Available with pex liner or silicone liner

How to order Water Hoses from Die-Pat

We also offer a bespoke hose service to suit individual requirements which can be manufactured in 2-3 days, please contact us on 01327 311144 for more details.

When ordering the following items please specify the following requirements prefixed with WH – for example: **WH12FF100012QB12**



1. Size of connection:
 - FF = Flat Female
 - FM = Flat Male
 - QB = Ball Valve
 - QC = Quick Connect
 - EL = Elbow
 - FC = Female Cone
 - CP = Compression
 - CPV = Compression with Isolation Valve
 - CPF = Chrome Push Fit
 - FFSF = Flat Faced Swivel Female
 - FFFE = Flat Faced Female Elbow
2. Length of hose in mm
3. Bore size: 9, 12, 19
4. Type of connection
5. Size of connection

Please order by 4pm for next-day delivery. Timed and special deliveries can also be arranged.

CANOPY HOOD ACCESSORIES



Die-Pat's range of canopy hood accessories includes canopy hood lights, stainless steel baffle filters and our patented baffle filter removal tool.

For additional items please see www.die-pat.co.uk or call our sales team on 01327 311144.

Baffle Filters

Working in conjunction with the fire suppression system, grease filters provide a strong defence against duct system fires. Baffle filters function by forcing grease-saturated air to change direction as it rises through the filter. Because the grease droplets cannot change direction as rapidly as the air carrying them, they end up condensing to the metal blades and then subsequently draining into the filter tray. This method drastically reduces the risk of spreading flames should a fire break out on the cooking surface below. Additionally, because grease is filtered into a tray, there is no build-up which would hinder airflow and function over time.

Our F92 range of polished stainless steel baffle filters are easily cleaned by soaking or dishwashing and comply with the DW172 standard.

Available from stock for next-day delivery.



Baffle Grease Filters | Polished finish

Stainless steel baffle filters suitable for all commercial applications. Strong construction. Frame with handles and drainage holes. Easily cleaned by soaking or dishwashing.

CODE	NOMINAL SIZE	ACTUAL SIZE (H x W x D) mm	WEIGHT kg
F922020	20" x 20"	495 x 495 x 48	1.80
F921818	18" x 18"	445 x 445 x 48	1.50
F921616	16" x 16"	395 x 395 x 48	1.35
F921620	16" x 20"	395 x 495 x 48	1.70
F922016	20" x 16"	495 x 395 x 48	1.70
F921020	10" x 20"	245 x 495 x 48	1.10

Baffle Filter Removal Tool

Our baffle filter removal tool has been specifically designed to eliminate the health and safety risks associated with filter removal from commercial kitchen canopies. Its patented design enables operatives to quickly and safely remove filters for cleaning.

FEATURES

- Quick-Release sliding prongs adjust to suit major baffle filter brands
- Quick-Release adjustable head adjusts to suit different filter housing angles
- Lightweight aluminium construction for ease of handling
- Long reach 1500mm pole including grease resistant rubber grip handles
- Folds flat for storage
- Wall mountable (optional wall bracket available)

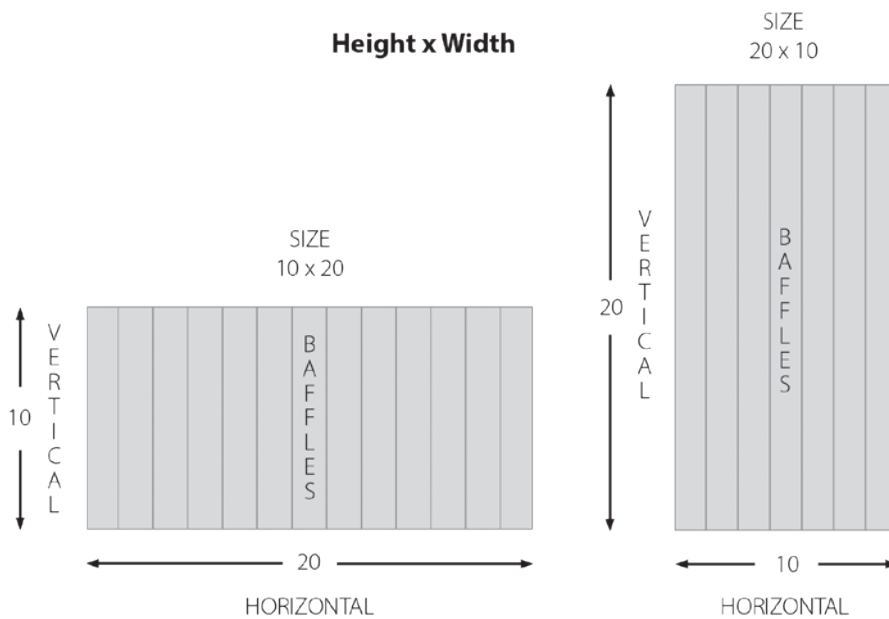


Baffle Filter Removal Tool | 1500 mm

CODE	ITEM
FRT	Baffle filter removal tool with quick release prongs

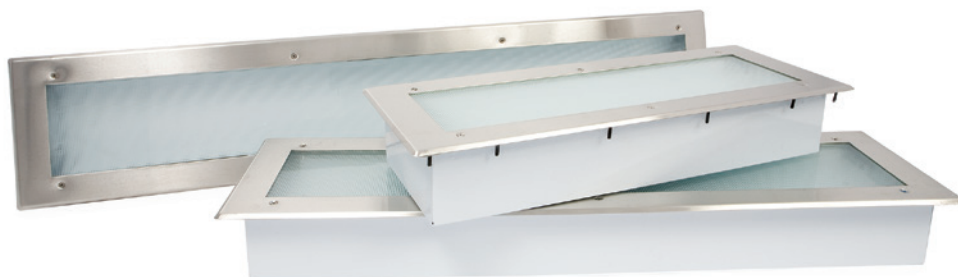
How to order Grease Filters from Die-Pat

Filters **MUST** be installed with baffles running in the vertical (top to bottom) position so the grease will run down the baffles to the grease trough in the hood. Standard sizes are ordered with the **VERTICAL** (top to bottom) dimension first, then the **HORIZONTAL** (left to right) dimension.



Fluorescent Canopy Hood Lights

Our L82 range of fluorescent canopy hood lights are of the highest quality and reliability. Manufactured from satin finish stainless steel with a tempered, prismatic glass diffuser, they are low profile for limited overhead clearance applications. Listed to 80°C with a 50,000 hours lamp life they meet NFPA and NEC 410 requirements and are NSF approved.



Fluorescent Canopy Hood Lights | Complete with Tubes

Recessed fluorescent canopy hood lights, available in 2ft, 3ft and 4ft lengths. For use in commercial cooking hoods with a low profile for limited overhead clearance. Body in stainless steel and baked white enamel, tempered prismatic glass diffuser, trim in one piece satin stainless steel.

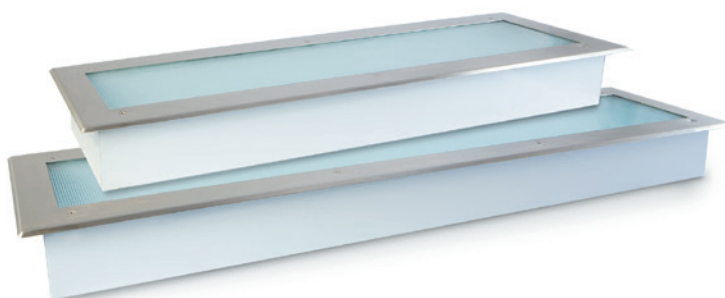
CODE	ITEM	W x L x H mm (INCL. TRIM)	MOUNTING CUT-OUT mm	FIXING HOLES
L821020/WT	Fluorescent canopy hood light – 2ft	260 x 667 x 114	216 x 622	12
L821030/WT	Fluorescent canopy hood light – 3ft	260 x 972 x 114	216 x 927	14
L821040/WT	Fluorescent canopy hood light – 4ft	260 x 1276 x 114	216 x 1232	14

FEATURES

- Recessed fluorescent light for use in commercial cooking hoods
- Low profile 4-1/2" (114mm) high – for limited overhead clearance applications
- Listed to 80°C
- Diffuser: Crystal tempered prismatic glass (prisms on inside of fixture), mounted in a stainless steel face frame with special sealing gasketing.
- Diffuser secured to body with stainless steel screws for easy servicing
- Body: Stainless steel with baked white enamel finish, providing a minimum 87% diffused reflection
- Tubes also available separately

LED Canopy Hood Lights

Available in 3ft and 4ft lengths. Contact our Sales department on 01327 311144 for more details.



Moulding & Dividers

FEATURES

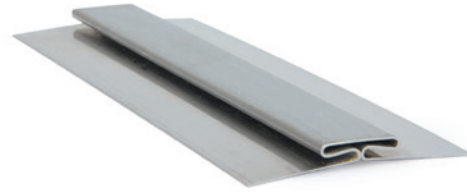
- Stainless steel construction, satin finish
- Accepts 1.6mm (1/16") wall flashing material
- Cap strip has hemmed edge for safety
- Designed specifically for stainless steel joining
- Individually plastic sleeved for protection of finish
- 2.5M to suit standard sheet size



Cap Strip | for 1.6 mm

Stainless steel cap strip for 1.6mm (1/16") material thickness. Bright finish.

CODE	ITEM	LENGTH mm
J631451-2.5	Cap strip – for 1.6mm	2500



Divider Bar with Galvanised Back Plate | for 1.6 mm

Stainless steel divider bar with galvanised backplate for 1.6mm (1/16") material thickness. Bright finish.

CODE	ITEM	LENGTH mm
J641450-2.5	Cap strip – for 1.6mm	2500

Silicone Sealant



FEATURES

- 305ml
- Available in clear, bright aluminium, white, black and red (hi-temp)
- Fits all standard caulking guns
- Furnished with removal tip
- FDA approved

Silicone Sealant | 305 ml

CODE	ITEM	COLOUR	MAX SERVICE TEMP.	BOXED QUANTITY
M901010	Silicone sealant – 305ml	Clear	200°C	12 tubes
M901012	Silicone sealant – 305ml	Aluminium	200°C	12 tubes
M901014	Silicone sealant – 305ml	White	200°C	12 tubes
M901016	Silicone sealant – 305ml	Black	200°C	12 tubes
M901018	Silicone sealant – 305ml	Hi Temp Red	260°C	12 tubes
M90CG	Caulking Gun – Mild steel plated. Ratchet operated for continuous flow. Fits all standard silicone tubes. Nozzle cutter.			

FRONT OF HOUSE



From coffee ground hoppers, knock-out drawers and scrap rings to plate lowerators and glass, jug & container rinsers, we stock an extensive range of front of house products in our UK warehouse for next-day delivery.

Coffee Ground Hoppers

Our easy to install, high quality, modern units are available from stock for next-day delivery. They are robust and hygienic with removable components for ease of cleaning.



Coffee Ground Hopper – Double

A double coffee ground hopper complete with knock-out bar.

Coffee Ground Hopper – Single

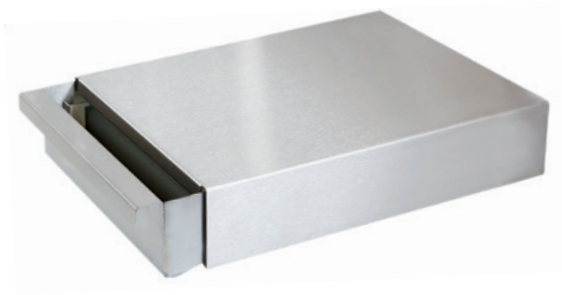
A single coffee ground hopper complete with knock-out bar.

CODE	ITEM	WIDTH x DEPTH x HEIGHT mm	CAPACITY litres	COUNTER CUT-OUT SIZE mm
AG14	Double coffee ground hopper	377 x 379 x 598	18	354 x 573
AG12	Single coffee ground hopper	377 x 233 x 299	8	354 x 276

Please order by 4pm for next-day delivery. Timed and special deliveries can also be arranged.

Coffee Knock Out Drawers

In a choice of 2 designs, our coffee knock out drawers are manufactured from 304 stainless steel.



Coffee Knock Out Drawers

Coffee knock out drawers manufactured from stainless steel.

CODE	ITEM	HEIGHT x WIDTH x LENGTH mm	BAR
CKD360	Coffee knock out drawer – Standard table top	74 x 251 x 355	Nylon
CKD360/SP	Coffee knock out drawer – Standard table top	74 x 251 x 355	Rubber
AP17	Coffee knock out drawer – Premium inset	164 x 377 x 431	TB311



Knock Out Bar | Suitable for AG Range

CODE	ITEM	LENGTH mm
TB311	Knock out bar with clips for AG12, AG14, AP17	310
KOBAR	Rubber knock out bar for AG3	322



Knock Out Bars | Suitable for CKD360

CODE	ITEM	LENGTH mm
CKD360/KB	Nylon knock out bar for CKD360	240
15-0014	Rubber knock out bar for CKD360	240

Scrap Rings

Solid rubber & stainless-steel scrap rings.



Scrap Rings | Grey Rubber

Solid rubber scrap rings to fit 5'-3/4" (146mm) opening.



Inset Scrap Ring | Stainless Steel

Stainless steel scrap chute to fit 6" (152mm) opening.

CODE	ITEM	HEIGHT mm	TOP DIA. mm	BASE DIA. mm
J929360	Grey rubber scrap ring – Cylinder	73 (Excl. base)	170	146
J925000	Grey rubber scrap ring – Funnel	76 (Excl. base)	225	146
J921000/01	Stainless steel scrap ring	133 (Total), 6 (Lip)	178	152

Undertable Drawers

Stackable stainless steel undertable drawer 1/1GN size with container depths of 100mm or 150mm. Choice of D-shaped handle or stainless steel flush pull.



Undertable Drawer | 100 mm deep container

Stainless steel undertable drawer assembly with full size gastronorm container. Designed to be easily stackable. The container can be easily removed for cleaning. Front panel: 18mm thick.

Undertable Drawer | 150 mm deep container

Stainless steel undertable drawer assembly with full size gastronorm container. Designed to be easily stackable. The container can be easily removed for cleaning. Front panel: 18mm thick.

CODE	CONTAINER DEPTH mm	UNIT HEIGHT mm	UNIT WIDTH mm	UNIT DEPTH mm	HANDLE
P150-100/02	100	115	390	530	D-shaped
P163-100/02	100	115	390	530	Flush pull
P150-150/02	150	165	390	530	D-shaped
P163-150/02	150	165	390	530	Flush pull

Undertable Lockable Drawers



Undertable Drawer with Lock | 100 mm deep container

Stainless steel lockable undertable drawer assembly with full size gastronorm container. Designed to be easily stackable. The container can be easily removed for cleaning. Front panel: 18mm thick.

Undertable Drawer with Lock | 150 mm deep container

Stainless steel lockable undertable drawer assembly with full size gastronorm container. Designed to be easily stackable. The container can be easily removed for cleaning. Front panel: 18mm thick.

CODE	CONTAINER DEPTH mm	UNIT HEIGHT mm	UNIT WIDTH mm	UNIT DEPTH mm	HANDLE
P150-100/L	100	115	390	530	D-shaped
P163-100/L	100	115	390	530	Flush pull
P150-150/L	150	165	390	530	D-shaped
P163-150/L	150	165	390	530	Flush pull

Glass Rinser and Filling Stations

ITEM
COMING
SOON

Front of House



Glass Rinser & Filling Station

CODE	WIDTH x DEPTH x HEIGHT mm
DPGR98551	454 x 270 x 26



Glass Rinser & Filling Station

CODE	WIDTH x DEPTH x HEIGHT mm
DPGR98552	454 x 270 x 26



Glass Rinser & Filling Station

CODE	WIDTH x DEPTH x HEIGHT mm
DPGR98553	450 x 450 x 26 (139 w / container)

Replacement parts and accessories are available, please contact us on 01327 311144 or sales@die-pat.co.uk for further details.

Please order by 4pm for next-day delivery. Timed and special deliveries can also be arranged.

Glass, Jug & Container Rinsers

Inset Jug Rinser

Ideal for anywhere where the rinsing of cups, jugs and glasses is required. This simple to use and maintain piece of equipment is a must for any restaurant, coffee house or juice bar to save time and money.

Available in 2 sizes – 1/6 GN and 1/3 GN



Inset Jug Rinser – 1/6 GN

Inset stainless steel jug rinser complete with rubber gasket. No electricity required to operate. Cleans jugs in seconds.

CODE	LENGTH mm	WIDTH mm	DEPTH mm
JR01A	176	162	65

Inset Jug Rinser – 1/3 GN

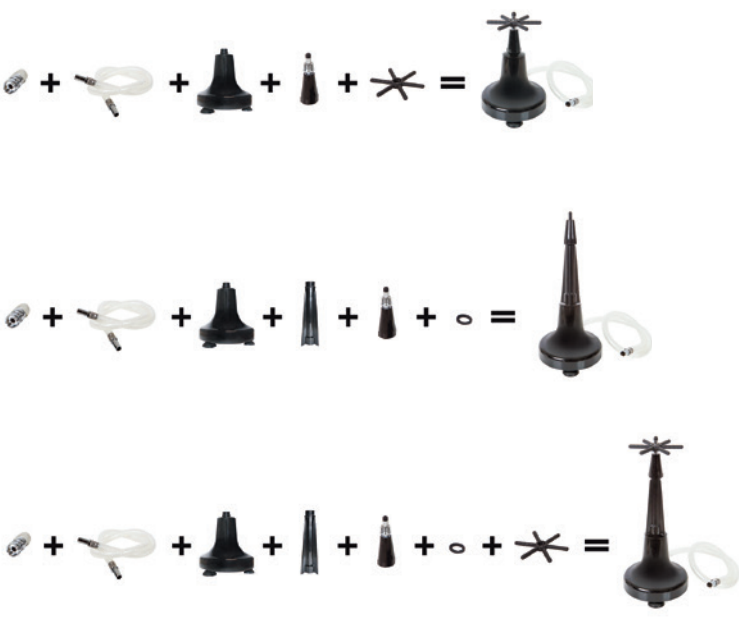
Inset stainless steel jug rinser complete with rubber gasket. No electricity required to operate. Cleans jugs in seconds.

CODE	LENGTH mm	WIDTH mm	DEPTH mm
JR01B	325	176	65

Container Rinser

Simple to use, just press down on the platform to activate the spray – no electricity required. Unit is supplied complete with assembly kit to alter height and nozzles for cleaning different equipment. Connects directly onto the faucet and suction feet holds the rinser in place. Polycarbonate construction with a stainless steel spray nozzle.

ACCESSORIES INCLUDED:



Container Rinser

CODE	HEIGHT
CR01C	223mm extendable to 353.5mm

Plate & Tray Lowerators

Front of House



Plate Lowerator | Unheated

Unheated plate lowerators for plates 190–340mm diameter. Plate capacity of up to 60 units.

CODE	PLATE DIA. mm	HEIGHT x OUT DIA. mm	CAPACITY
DPPL101	190 - 240	740 x 330	60
DPPL102	230 - 280	740 x 370	60
DPPL103	260 - 310	740 x 400	60
DPPL104	290 - 340	740 x 430	60



Plate Lowerator | Heated

500W heated incounter plate lowerators with neon-light switch and selectable thermostat for plates 190–340mm diameter. Plate capacity of up to 60 units.

CODE	PLATE DIA. mm	HEIGHT x OUT DIA. mm	CAPACITY
DPPLH201	190 - 240	740 x 330	60
DPPLH202	230 - 280	740 x 370	60
DPPLH203	260 - 310	740 x 400	60
DPPLH204	290 - 340	740 x 430	60



Tray Lowerator | Unheated

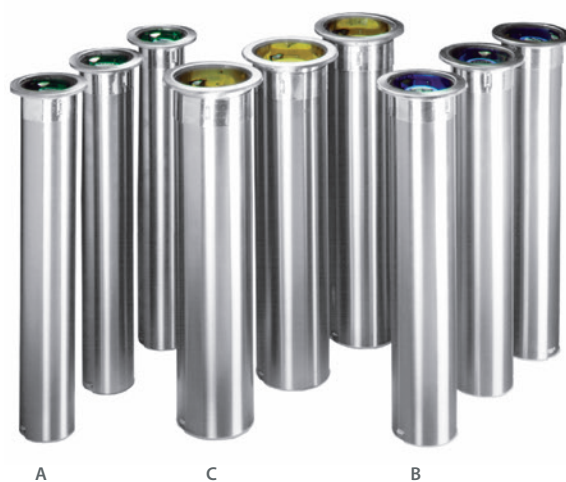
Unheated incounter tray/basket lowerators available for trays from 480 x 370mm to 530 x 370mm or for baskets from 500 x 500mm to 650 x 530mm. Loading capacity of up to 120 trays or 10 baskets.

CODE	TRAY/BASKET LOAD AREA mm	UNIT W x D x H mm	TRAY/BASKET CAP.
DPTL300	530 x 650	620 x 726 x 730	120 / 10
DPTL301	500 x 500	590 x 566 x 730	120 / 10
DPTL302	530 x 370	620 x 436 x 730	120 / 10
DPTL303	480 x 370	570 x 436 x 730	120 / 10
DPTL304	530 x 325	620 x 391 x 730	120 / 10

Cup Dispensers

FEATURES

- Stainless steel construction with satin finish
- Top loading with spring tension
- Low profile - only 7mm protrusion above counter top
- Removable – a 1/4 turn releases the dispenser from the counter top
- Gasketed counter seal
- Wax and foam cup models



Cup Dispensers | 180 - 360 ml | 6 - 12 oz cup size

CODE	TYPE - ITEM	CUP RIM DIA. mm	HOLE SIZE mm	OUTER FLANGE DIA. mm	LENGTH mm
C3200CV	A - Vertical mount	56 - 81	110	135	610
C3200CH	A - Horizontal mount	56 - 81	110	135	610
C3200CF	A - Foam cup	56 - 81	110	135	610

Cup Dispensers | 360 - 720 ml | 12 - 24 oz cup size

CODE	TYPE - ITEM	CUP RIM DIA. mm	HOLE SIZE mm	OUTER FLANGE DIA. mm	LENGTH mm
C3400CV	B - Vertical mount	63 - 78	120	150	610
C3400CH	B - Horizontal mount	63 - 78	120	150	610
C3400CF	B - Foam cup	63 - 78	120	150	610

Cup Dispensers | 960 - 1380 ml | 32 - 46 oz cup size

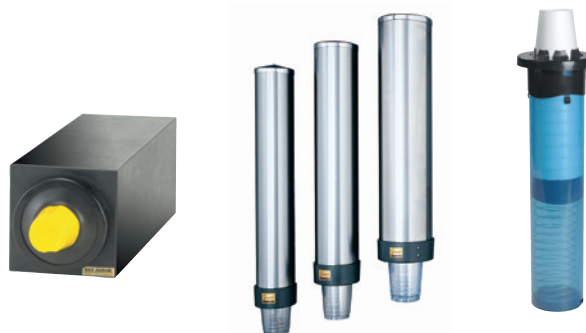
CODE	TYPE - ITEM	CUP RIM DIA. mm	HOLE SIZE mm	OUTER FLANGE DIA. mm	LENGTH mm
C3500CV	C - Vertical mount	102 - 124	145	170	610
C3500CH	C - Horizontal mount	102 - 124	145	170	610
C3500CF	C - Foam cup	102 - 124	145	170	610

EZ-Fit Cup Dispensers | 178 - 710 ml

CODE	ITEM	CUP RIM DIA. mm	HOLE SIZE mm	OUTER FLANGE DIA. mm	LENGTH mm
C2210C	Vertical mount	73 - 98	124	154	590
C2210C-18	Vertical mount	73 - 98	124	154	457



Other styles available, please call us on 01327 31144 for more information.



Brackets



3 Rail Tray Slide Bracket | 200 lbs

Tray slide bracket in stainless steel, polished to a satin finish. For support of 25mm (1") rails. Load capacity: 200 lbs per 2 brackets.

CODE	ITEM	HEIGHT x CENTRE SADDLES mm
J194960	3 rail tray slide bracket	108 x 102 (4")



3 Rail Tray Slide Bracket - Fold Down | 150 lbs

Tray slide bracket in stainless steel. For support of 25mm (1") rails. Load capacity: 150 lbs per 2 brackets.

CODE	ITEM	HEIGHT x CTR. SADDLES mm
J194955	3 rail tray slide bracket - fold down	86 x 102 (4")



Heavy Duty Folding Shelf Brackets | 200 lbs

Heavy duty bracket folds down when not in use. Shelves can be easily removed for cleaning. Available with zinc plated steel mount or stainless steel mount. Load capacity: 200 lbs per 2 brackets.

CODE	ITEM
J174270	Heavy duty folding bracket - Chrome plated zinc mount
J174273	Heavy duty folding bracket - Stainless steel mount



Heavy Duty Folding Shelf Bracket - Removable | 200 lbs

Heavy duty, removable bracket folds down when not in use. Shelves can be easily removed for cleaning. Stainless steel. Load capacity: 200 lbs per 2 brackets.

CODE	ITEM
J195000	Heavy duty folding bracket - Stainless steel - Removable



Folding Shelf Bracket | 200 lbs

Stainless steel folding shelf bracket. Load capacity: 200 lbs per 2 brackets.

CODE	ITEM
J194967	Fold down shelf bracket - Stainless steel



Fixed Shelf Bracket | 200 lbs

Fixed shelf bracket in stainless steel, polished to a satin finish. Load capacity: 200 lbs per 2 brackets.

CODE	ITEM
J194966	Fixed shelf bracket - Stainless steel

Components



90° Elbow & U Bend | 25 mm stainless steel tubing

90° Elbow and U Bend designed for rails, supports and tray slides. U Bend can be used with 3 rail tray slide brackets (Code: J194960 & J194955).

CODE	ITEM
J140117	90° Elbow
J134488	U Bend

CASTORS, LEGS & FEET



Commercial catering castors in light, medium and heavy duty options with either bolt hole or plate fittings. An extensive range is carried in stock for next-day delivery.

CASTORS

Grey TPE Tyre Castors

FEATURES

- Press steel fork assembly zinc plated
- Swivel head and double ball race and head seal
- Wheels with TPE-tyre (thermoplastic elastomer) on polypropylene rim
- Nut bolt and axle
- Plain bearing hub complete with metal thread guards
- Combined swivel and wheel brake



Grey TPE Castors, Bolt Hole Fitting | 75-100 kg Load

Swivel head institutional castors with grey rubber tyre, bolt hole fitting and load capacity of 75-100 kg. Complete with expander to suit 30mm box section (1.2-1.5mm wall).

CODE	FITTING	WHEEL DIA. mm	HEIGHT mm	BOLT HOLE DIA. mm	LOAD CAPACITY kg
183021/27S	Bolt Hole – Swivel	75	100	M12	75
183022/27S	Bolt Hole – Braked	75	100	M12	75
183023/P/27S	Bolt Hole – Swivel	100	134	M12	100
183024/P/27S	Bolt Hole – Braked	100	134	M12	100



Grey TPE Bolt Hole Fitting Castors, Height Adjustable | 100 kg Load

100mm grey rubber bolt hole castors providing up to 30mm adjustment.

CODE	FITTING	WHEEL DIA. mm	HEIGHT mm	BOLT HOLE DIA. mm	LOAD CAPACITY kg
183023/AS1	Bolt Hole – Swivel	100	134	M12	100
183024/AS1	Bolt Hole – Braked	100	134	M12	100



Grey TPE Castors, Plate Fitting | 75-100 kg Load

Swivel head institutional castors with grey rubber tyre, plate fitting and load capacity of 75-100 kg.

CODE	FITTING	WHEEL DIA. mm	HEIGHT mm	PLATE SIZE mm	HOLE CENTRES mm	LOAD CAPACITY kg
182571	Plate – Swivel	75	103	105 x 80	80 x 60	75
182572	Plate – Braked	75	103	105 x 80	80 x 60	75
182573	Plate – Swivel	100	137	105 x 80	80 x 60	100
182574	Plate – Braked	100	137	105 x 80	80 x 60	100

Please order by 4pm for next-day delivery. Timed and special deliveries can also be arranged.

Elastic Rubber Wheel Castors

Expander fittings can also be purchased as a standalone item.

FEATURES

- Pressed steel fork assembly zinc plated bracket
- Swivel head, double ball race and head seal
- Plain bearing
- Elastic rubber tyre with plastic centre
- Plain bearing hub complete with thread guards
- Colour coded thread guards on 100mm castors
- Combined swivel and wheel brake



Elastic Rubber Castors, Bolt Hole Fitting | 200 kg Load

Medium duty bolt hole fitting castor, 100mm diameter elastic rubber wheel with nylon centre, 200kg load capacity.

CODE	FITTING	WHEEL DIA. mm	HEIGHT mm	BOLT HOLE DIA. mm	LOAD CAPACITY kg
RT4LBHBLU	Bolt Hole – Swivel	100	124	M12	200
RT4LBHBBLU	Bolt Hole – Swivel braked	100	124	M12	200



Elastic Rubber Castors, Plate Fitting | 200 kg Load

Medium duty plate fitting castor, 100mm diameter elastic rubber wheel with nylon centre, 200kg load capacity.

CODE	FITTING	WHEEL DIA. mm	HEIGHT mm	PLATE SIZE mm	HOLE CENTRES mm	LOAD CAPACITY kg
RT4LPBLU	Plate – Swivel	100	125	105 x 80	80 x 60	200
RT4LPBBLU	Plate – Swivel braked	100	125	105 x 80	80 x 60	200

Nylon Wheel Castors

FEATURES

- Pressed steel fork assembly zinc plated
- Swivel head, double ball race and head seal
- Nut bolt and axle
- White nylon wheel
- Plain bore



White Nylon Castors, Bolt Hole Fitting | 100 kg Load

Swivel head institutional castors with white nylon wheel, bolt hole fitting and load capacity of 100 kg. Complete with expander to suit 30mm box section. (1.2-1.5mm wall).

CODE	FITTING	WHEEL DIA. mm	HEIGHT mm	BOLT HOLE DIA. mm	LOAD CAPACITY kg
179996NY/27S	Bolt Hole – Swivel	75	100	M12	75
179997NY/27S	Bolt Hole – Braked	75	100	M12	75
180185NY/27S	Bolt Hole – Swivel	100	134	M12	100
501319NY/27S	Bolt Hole – Braked	100	134	M12	100



FEATURES

- Pressed steel fork assembly zinc plated
- Swivel head and double ball race and head seal
- Nylon wheel
- Plain bore
- Combined swivel and wheel brake

Nylon Wheel Castors, Plate Fitting | 200 kg Load

Plate fitting swivel head castor: 100mm diameter medium duty nylon wheel, 200kg load capacity.

CODE	FITTING	WHEEL DIA. mm	HEIGHT mm	PLATE SIZE mm	HOLE CENTRES mm	LOAD CAPACITY kg
RT4LPNY	Plate – Swivel	100	125	105 x 80	80 x 60	200
RT4LPBNY	Plate – Braked	100	125	105 x 80	80 x 60	200

LEGS & FEET

Adjustable Foot Inserts



Flanged Foot Insert | 900 kg Load

Flanged foot insert to suit 30mm box section. 27mm adjustment.



Hexagon Foot Insert | 900 kg Load

Hexagon foot insert to suit 30mm box section. 27mm adjustment.

CODE	TUBE SIZE mm	FOOT	MIN / MAX HEIGHT mm	LOAD RATING kg each	FINISH
INA30F/01	30 sq.	Flange	23 / 50	900	Natural
INA30H/01	30 sq.	Hexagon	23 / 50	900	Natural



Flanged Foot Insert | 900 kg Load

Flanged foot insert to suit 40mm box section. 25mm adjustment.



Hexagon Foot Insert | 900 kg Load

Hexagon foot insert to suit 40mm box section. 25mm adjustment.

CODE	TUBE SIZE mm	FOOT	MIN / MAX HEIGHT mm	LOAD RATING kg each	FINISH
INO40F/01	40 sq.	Flange	39 / 64	900	Natural
INO40H/01	40 sq.	Hexagon	39 / 64	900	Natural

Foot Extension Kit

Foot Extension Kit | 75 mm

75mm foot extension kit, including insert body, for use with 30mm box section. (1.2-1.5mm wall).

CODE	ITEM
IN75S-KIT	Foot extension kit for 30mm box section



Equipment Legs - Heavy Duty



Heavy Duty Equipment Legs | 41 mm dia.

Stainless steel, heavy duty equipment legs with hexagon base. 41mm outer diameter. Available in 100mm, 125mm and 150mm heights. Supplied with removable mounting plate (90 x 90mm). Hole centres: 70 x 70mm.

CODE	TUBE SIZE mm	FOOT	HEIGHT mm	SAFE ADJUSTMENT mm	LOAD RATING kg each	MATERIAL
A41-100H	41 OD	Hexagon	100	30	900	Stainless steel
A41-125H	41 OD	Hexagon	125	30	900	Stainless steel
A41-150H	41 OD	Hexagon	150	30	900	Stainless steel



Heavy Duty Equipment Legs | 50 mm dia.

Stainless steel, heavy duty equipment legs with hexagon base. 50mm outer diameter. Available in 100mm, 125mm and 150mm heights. Supplied with removable mounting plate (90 x 90mm). Hole centres: 70 x 70mm.

CODE	TUBE SIZE mm	FOOT	HEIGHT mm	SAFE ADJUSTMENT mm	LOAD RATING kg each	MATERIAL
A50-100H	50 OD	Hexagon	100	30	900	Stainless steel
A50-125H	50 OD	Hexagon	125	30	900	Stainless steel
A50-150H	50 OD	Hexagon	150	30	900	Stainless steel

Please order by 4pm for next-day delivery. Timed and special deliveries can also be arranged.



Die-Pat Divisions Limited
The Die-Pat Centre
Broad March, Daventry,
Northamptonshire NN11 4HE

HOW TO FIND US

We are situated in Northamptonshire, on the south east side of Daventry, within easy reach of the A45. We are approximately 15 minutes drive from the M1 (southbound exit at junction 18, or northbound exit at junction 16).

FROM THE NORTH

- Exit M1 at Junction 18
- Follow A5 South to A361 signposted Daventry
- Follow A425 Northern Way, then South Way, signposted Long March Industrial Estate
- Take first right into Broad March
- The Die-Pat Centre is situated on the right hand side

FROM THE SOUTH

- Exit M1 at Junction 16
- Follow A45 signposted Daventry
- At first roundabout take third exit onto South Way
- Take first left into Long March
- Take first right into Broad March
- The Die-Pat Centre is situated on the right hand side

Call: 01327 311144 | sales@die-pat.co.uk | www.die-pat.co.uk

