



DISTRIBUTOR
Product Catalogue

INTRODUCTION



Welcome to Die-Pat...

...and also to our inaugural brochure specifically tailored for commercial catering equipment distributors, which includes sink units & bowls, hand wash basins, taps & pre-rinse sprays, gas & water hoses, canopy hood accessories, front of house equipment and castors, legs and feet.

Over 50 years after we began trading, we at Die-Pat – which remains a family owned business – take great pride in the standard of equipment and service we supply. Using only the highest quality products, Die-Pat ensure that all of our products will meet the requirements demanded by our customers, including our market leading ability to design and source products on behalf of customers for specific applications. Our aim is to achieve consistently high standards across all our services and products whilst maintaining a competitive edge on price.

Benefits we offer are:

- *Next day delivery*
- *Technical expertise across all our products*
- *Experienced staff to assist and guide our customers*
- *Large stock-holding of over 1400 different product ranges*
- *Dedicated customer service contacts*
- *External sales team for on-site support*

We hope you find our new brochure to be practical with useful and clear content, however if you cannot find the products you are looking for please visit www.die-pat.co.uk or telephone our friendly sales team on 01327 311144. The whole team here at Die-Pat are very much looking forward to working with you.

A handwritten signature in blue ink, appearing to read 'Eddy Edwards'.

Eddy Edwards
Managing Director



PRODUCT SECTIONS

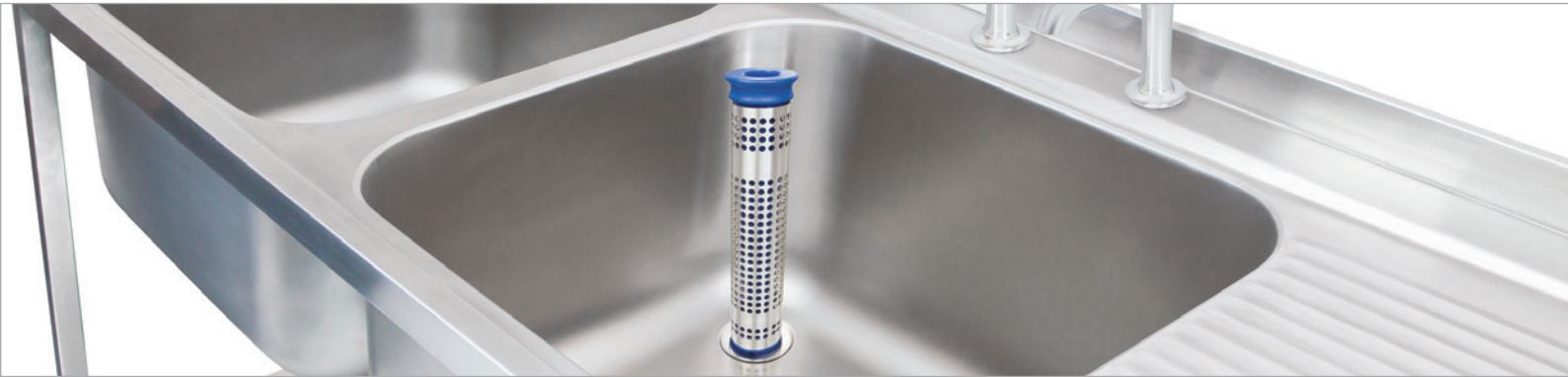


| | |
|---------------------------------|-----------|
| Sink Unit Assemblies | 3 |
| Sink Bowls | 7 |
| Wash Basins | 9 |
| Janitorial | 13 |
| Taps | 15 |
| Pre-Rinse Sprays | 21 |
| Sink Accessories | 27 |
| Hoses | 29 |
| Canopy Hood Accessories | 31 |
| Front of House | 35 |
| Castors, Legs & Feet | 43 |

@ Die-Pat Divisions Ltd. 2018

Whilst every effort has been made to ensure that all images and graphical representations of products and/or descriptions of products correspond to the actual products, Die-Pat Divisions Ltd is not responsible for any variations from these descriptions. This catalogue may not be reproduced in any form or by any means in whole or in part, without the written consent of Die-Pat Divisions Ltd. Die-Pat Divisions Ltd reserves the right to make any changes and to discontinue any of its products without notice.

SINK UNIT ASSEMBLIES



Manufactured from high grade stainless steel, our extensive range of commercial catering sinks are available from stock for next-day delivery.

Standard lengths offered from 1000mm to 2400mm with a wide variety of drainer and bowl configurations. All units are supplied flat-pack with full instructions for easy self-assembly and adjustable feet for on-site levelling.

Variations on standard sizing are available on request, so if you can't see the specific unit you require, please contact our sales office on 01327 311144 for more information.

Please see pages 15-20 or visit www.die-pat.co.uk for our comprehensive range of taps.

Sink Unit Assemblies



Single Bowl / Single Drainer Sink Unit Assembly | 1000 mm

Flat pack 304 stainless steel sink unit with under-shelf. Supplied with full instructions for easy self-assembly and adjustable feet for on-site levelling. Two tap holes centrally located in the bowl. Height range: 879-910mm. Bowl: 400 x 400 x 300mm.



Single Bowl / Single Drainer Sink Unit Assembly | 1200 mm

Flat pack 304 stainless steel sink unit with under-shelf. Supplied with full instructions for easy self-assembly and adjustable feet for on-site levelling. Two tap holes centrally located in the bowl. Height range: 879-910mm. Bowl: 400 x 400 x 300mm.

| CODE | L x D x H mm | BOWL / DRAINER | DRAINER | BOWL SIZE mm | TAP HOLE DIA. / HOLE CTR. mm |
|--------------------|------------------|------------------------------|---------|--------------------------|------------------------------|
| SA/SB10-60-44-SDLH | 1000 x 600 x 900 | Single Bowl / Single Drainer | LH | 1 x 400 x 400 x 300 deep | 22 / 180 |
| SA/SB10-60-44-SDRH | 1000 x 600 x 900 | Single Bowl / Single Drainer | RH | 1 x 400 x 400 x 300 deep | 22 / 180 |
| SA/SB12-60-44-SDLH | 1200 x 600 x 900 | Single Bowl / Single Drainer | LH | 1 x 400 x 400 x 300 deep | 22 / 180 |
| SA/SB12-60-44-SDRH | 1200 x 600 x 900 | Single Bowl / Single Drainer | RH | 1 x 400 x 400 x 300 deep | 22 / 180 |



Single Bowl / Double Drainer Sink Unit Assembly | 1500 mm

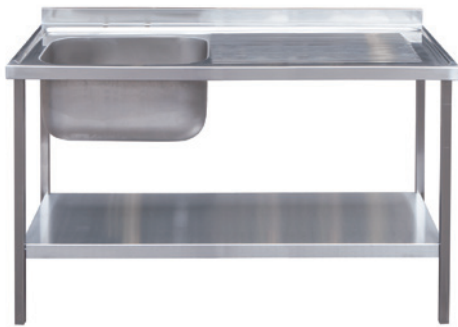
Flat pack 304 stainless steel sink unit with under-shelf. Supplied with full instructions for easy self-assembly and adjustable feet for on-site levelling. Two tap holes centrally located in the bowl. Height range: 879-910mm. Bowl: 500 x 400 x 300mm.



Double Bowl / Single Drainer Sink Unit Assembly | 1500 mm

Flat pack 304 stainless steel sink unit with under-shelf. Supplied with full instructions for easy self-assembly and adjustable feet for on-site levelling. Two sets of 2 tap holes centrally located in each bowl. Height range: 879-910mm. Bowls: 400 x 400 x 300mm | 500 x 400 x 300mm.

| CODE | L x D x H mm | BOWL / DRAINER | DRAINER | BOWL SIZE mm | TAP HOLE DIA. / HOLE CTR. mm |
|--------------------|------------------|------------------------------|---------|--------------------------|------------------------------|
| SA/SB15-60-54-DD | 1500 x 600 x 900 | Single Bowl / Double Drainer | LH & RH | 1 x 500 x 400 x 300 deep | 22 / 180 |
| SA/DB15-60-44-SDLH | 1500 x 600 x 900 | Double Bowl / Single Drainer | LH | 2 x 400 x 400 x 300 deep | 22 / 180 |
| SA/DB15-60-44-SDRH | 1500 x 600 x 900 | Double Bowl / Single Drainer | RH | 2 x 400 x 400 x 300 deep | 22 / 180 |
| SA/DB15-60-54-SDLH | 1500 x 600 x 900 | Double Bowl / Single Drainer | LH | 2 x 500 x 400 x 300 deep | 22 / 180 |
| SA/DB15-60-54-SDRH | 1500 x 600 x 900 | Double Bowl / Single Drainer | RH | 2 x 500 x 400 x 300 deep | 22 / 180 |



Single Bowl / Single Drainer Sink Unit Assembly | 1200 mm

Flat pack 304 stainless steel sink unit with under-shelf. Supplied with full instructions for easy self-assembly and adjustable feet for on-site levelling. Two tap holes centrally located in the bowl. Height range: 879-910mm. Bowl: 600 x 500 x 300mm.



Single Bowl / Single Drainer Sink Unit Assembly | 1500 mm

Flat pack 304 stainless steel sink unit with under-shelf. Supplied with full instructions for easy self-assembly and adjustable feet for on-site levelling. Two tap holes centrally located in the bowl. Height range: 879-910mm. Bowl: 600 x 500 x 300mm.

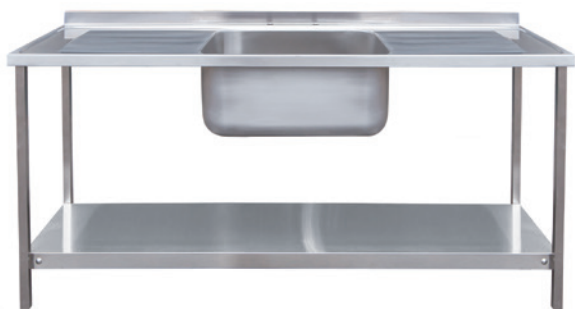
| CODE | L x D x H mm | BOWL / DRAINER | DRAINER | BOWL SIZE mm | TAP HOLE DIA. / HOLE CTR. mm |
|--------------------|------------------|------------------------------|---------|--------------------------|------------------------------|
| SA/SB12-65-65-SDLH | 1200 x 650 x 900 | Single Bowl / Single Drainer | LH | 1 x 600 x 500 x 300 deep | 22 / 180 |
| SA/SB12-65-65-SDRH | 1200 x 650 x 900 | Single Bowl / Single Drainer | RH | 1 x 600 x 500 x 300 deep | 22 / 180 |
| SA/SB15-65-65-SDLH | 1500 x 650 x 900 | Single Bowl / Single Drainer | LH | 1 x 600 x 500 x 300 deep | 22 / 180 |
| SA/SB15-65-65-SDRH | 1500 x 650 x 900 | Single Bowl / Single Drainer | RH | 1 x 600 x 500 x 300 deep | 22 / 180 |

Standpipe Strainer & Waste Kit | Stainless Steel

Perforated stainless steel strainers with plastic inner, complete with stainless steel waste to suit 1-1/2" BSP angled European waste hole. Bowl depth: 250mm (10") | 300mm (12") | 380mm (14")

| CODE | MODEL | DEPTH mm |
|------------|-----------------------------------|----------|
| EURO-SS-10 | Strainer & Waste Kit to suit bowl | 250 |
| EURO-SS-12 | Strainer & Waste Kit to suit bowl | 300 |
| EURO-SS-14 | Strainer & Waste Kit to suit bowl | 380 |





Single Bowl / Double Drainer Sink Unit Assembly | 1800 mm

Flat pack 304 stainless steel sink unit with under-shelf. Supplied with full instructions for easy self-assembly and adjustable feet for on-site levelling. Two tap holes centrally located in the bowl. Height range: 879-910mm. Bowl: 600 x 500 x 300mm.



Double Bowl / Single Drainer Sink Unit Assembly | 1800 mm

Flat pack 304 stainless steel sink unit with under-shelf. Supplied with full instructions for easy self-assembly and adjustable feet for on-site levelling. Two sets of 2 tap holes centrally located in each bowl. Height range: 879-910mm. Bowls: 600 x 500 x 300mm.

| CODE | L x D x H mm | BOWL / DRAINER | DRAINER | BOWL SIZE mm | TAP HOLE DIA. / HOLE CTR. mm |
|--------------------|------------------|------------------------------|---------|--------------------------|------------------------------|
| SA/SB18-65-65-DD | 1800 x 650 x 900 | Single Bowl / Double Drainer | LH & RH | 1 x 600 x 500 x 300 deep | 22 / 180 |
| SA/DB18-65-65-SDLH | 1800 x 650 x 900 | Double Bowl / Single Drainer | LH | 2 x 600 x 500 x 300 deep | 22 / 180 |
| SA/DB18-65-65-SDRH | 1800 x 650 x 900 | Double Bowl / Single Drainer | RH | 2 x 600 x 500 x 300 deep | 22 / 180 |



Double Bowl / Double Drainer Sink Unit Assembly | 2400 mm

Flat pack 304 stainless steel sink unit with under-shelf. Supplied with full instructions for easy self-assembly and adjustable feet for on-site levelling. Two sets of 2 tap holes centrally located in each bowl. Height range: 879-910mm. Bowls: 600 x 500 x 300mm.

| CODE | L x D x H mm | BOWL / DRAINER | DRAINER | BOWL SIZE mm | TAP HOLE DIA. / HOLE CTR. mm |
|------------------|------------------|------------------------------|---------|--------------------------|------------------------------|
| SA/DB24-65-65-DD | 2400 x 650 x 900 | Double Bowl / Double Drainer | LH & RH | 2 x 600 x 500 x 300 deep | 22 / 180 |

Standpipe Strainer & Waste Kit | Chrome Plated

Perforated stainless steel strainers with plastic inner, complete with chrome plated waste to suit 1-1/2" BSP angled European waste hole. Bowl depth: 250mm (10") | 300mm (12") | 380mm (14")

| CODE | MODEL | DEPTH mm |
|------------|-----------------------------------|----------|
| EURO-CP-10 | Strainer & Waste Kit to suit bowl | 250 |
| EURO-CP-12 | Strainer & Waste Kit to suit bowl | 300 |
| EURO-CP-14 | Strainer & Waste Kit to suit bowl | 380 |



Notes...

Notes

Please order by 4pm for next-day delivery. Timed and special deliveries can also be arranged.

SINK BOWLS



Commercial weld-in and inset sink bowls manufactured from 304 stainless steel. Offered in a range of sizes from our extensive stock for next-day delivery.

Please see pages 15-20 or visit www.die-pat.co.uk for our comprehensive range of taps.

Sink Bowls



Kit Bowls | Flat Flange

Sink bowls made from 1mm thick stainless steel with a polished finish. Flat flange for weld-in or inset installation. All bowls supplied complete with VASF waste and overflow. Left or right hand waste hole options available.

| CODE | BOWL SIZE mm | WASTE HOLE OPTION |
|----------------|----------------------|-------------------|
| KIT252520P | 250 x 250 x 200 deep | |
| KIT294020P | 290 x 400 x 200 deep | |
| KIT333320P | 330 x 330 x 200 deep | |
| KIT403420P | 400 x 340 x 200 deep | RH / LH |
| KIT403425P | 400 x 340 x 250 deep | RH / LH |
| KIT404020P | 400 x 400 x 200 deep | RH / LH |
| KIT454520P | 450 x 450 x 200 deep | |
| KIT504030P/WOH | 500 x 400 x 300 deep | RH / LH |

EURO Bowls | Flat Flange

Sink bowls made from 1mm thick stainless steel with a polished finish. Flat flange for weld-in or inset installation. All bowls supplied complete with waste & strainer. Left or right hand waste hole options available.

| CODE | BOWL SIZE mm | WASTE HOLE OPTION |
|---------------|----------------------|-------------------|
| EURO-40-10-SS | 400 x 400 x 250 deep | |
| EURO-40-12-SS | 400 x 400 x 300 deep | |
| EURO-50-10-SS | 500 x 400 x 250 deep | RH / LH |
| EURO-50-12-SS | 500 x 400 x 300 deep | RH / LH |
| EURO-60-10-SS | 600 x 450 x 250 deep | RH / LH |
| EURO-60-12-SS | 600 x 450 x 300 deep | RH / LH |



Inset Bowls | No Studs

Sink bowls made from 1 mm thick stainless steel with a polished finish and inset lip. All bowls supplied complete with VASF waste and overflow.

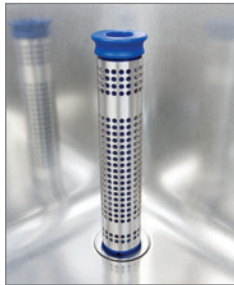
| CODE | BOWL SIZE mm |
|---------|----------------------|
| VDI3320 | 330 x 330 x 200 deep |
| VDI4030 | 400 x 400 x 300 deep |



Waste & Overflow Kit

Commercial sink bowl waste kit for slotted overflow.

| CODE | ITEM |
|------|---------------------------------------|
| VASF | 1-1/2" waste kit for slotted overflow |



Standpipe Strainer & Waste Kit | Stainless Steel

Perforated stainless steel strainers with plastic inner, complete with stainless steel waste to suit 1-1/2" BSP angled European waste hole. Waste flange: 72mm. Bowl depth: 250mm (10") | 300mm (12") | 380mm (14")

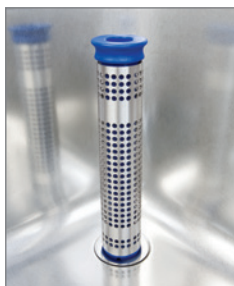
| CODE | MODEL | DEPTH mm |
|------------|-----------------------------------|----------|
| EURO-SS-10 | Strainer & Waste Kit to suit bowl | 250 |
| EURO-SS-12 | Strainer & Waste Kit to suit bowl | 300 |
| EURO-SS-14 | Strainer & Waste Kit to suit bowl | 380 |



Standpipe Strainer & Waste Kit | Chrome Plated

Perforated stainless steel strainers with plastic inner, complete with chrome plated waste to suit 1-1/2" BSP angled European waste hole. Waste flange: 72mm. Bowl depth: 250mm (10") | 300mm (12") | 380mm (14")

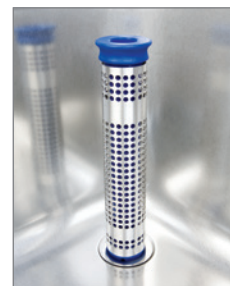
| CODE | MODEL | DEPTH mm |
|------------|-----------------------------------|----------|
| EURO-CP-10 | Strainer & Waste Kit to suit bowl | 250 |
| EURO-CP-12 | Strainer & Waste Kit to suit bowl | 300 |
| EURO-CP-14 | Strainer & Waste Kit to suit bowl | 380 |



Standpipe Strainer & Waste Kit | Stainless Steel

Perforated stainless steel strainers with plastic inner, complete with stainless steel waste to suit 1-1/2" BSP flat flange waste hole. Waste flange: 89mm. Bowl depth: 250mm (10") | 300mm (12") | 380mm (14")

| CODE | MODEL | DEPTH mm |
|------------|-----------------------------------|----------|
| BRIT-SS-10 | Strainer & Waste Kit to suit bowl | 250 |
| BRIT-SS-12 | Strainer & Waste Kit to suit bowl | 300 |
| BRIT-SS-14 | Strainer & Waste Kit to suit bowl | 380 |



Standpipe Strainer & Waste Kit | Chrome Plated

Perforated stainless steel strainers with plastic inner, complete with chrome plated waste to suit 1-1/2" BSP flat flange waste hole. Waste flange: 89mm. Bowl depth: 250mm (10") | 300mm (12") | 380mm (14")

| CODE | MODEL | DEPTH mm |
|------------|-----------------------------------|----------|
| BRIT-CP-10 | Strainer & Waste Kit to suit bowl | 250 |
| BRIT-CP-12 | Strainer & Waste Kit to suit bowl | 300 |
| BRIT-CP-14 | Strainer & Waste Kit to suit bowl | 380 |

WASH BASINS



Our extensive range of superior finish 304 stainless steel wash hand basins are supplied direct from stock for next-day delivery.

Multiple options available providing you with a comprehensive choice; wall mounted, corner, inset or knee operated, all are supplied complete with combined overflow waste kit. Wall mounted units are manufactured with keyhole slots for easy on-site installation.

Please see pages 15-20 or visit www.die-pat.co.uk for our comprehensive range of taps.

Inset Wash Basins



Inset Wash Basin | Polished

Commercial wash basin made from 1.2mm stainless steel, with inset rim. Supplied complete with a FW1PC combined 32mm waste and overflow kit.

| CODE | BOWL DIA. x DEPTH mm |
|--------|----------------------|
| HB230R | 230 x 160 |
| HB260R | 260 x 160 |
| HB300R | 290 x 160 |

Inset Wash Basin c/w Studs | Polished

Commercial wash basin made from 1.2mm stainless steel, with inset rim and complete with studs. Supplied complete with a FW1PC combined 32mm waste and overflow kit.

| CODE | BOWL DIA. x DEPTH mm | TAP HOLES | TAP HOLE DIA. mm |
|----------|----------------------|-----------|------------------|
| HB300R/I | 290 x 160 | 0 | 22 |
| HB320I | 290 x 160 | 2 | 22 |
| HB290I | 290 x 160 | 1 | 22 |



Round Inset Wash Basin | Polished

Commercial wash basin with inset rim and three stud fixings. Supplied complete with a SR1 waste kit.

| CODE | INT. DIA. x DEPTH mm | FLANGE DIA. mm | FIXINGS |
|-------|----------------------|----------------|---------------------------------------|
| VR30i | 300 x 180 | 394 | Three stud fixing. No ribs in base |
| VR38i | 380 x 170 | 414 | |
| VR42i | 420 x 170 | 454 | |

Waste & Overflow Kits

Combined waste and overflow packs to suit inset wash hand basins.

| CODE | ITEM |
|--------|--|
| FVW1PC | 32mm waste & overflow pack suitable for HB260R, HB300R, HB290S, HB430S, HBCW |
| SR1 | Combined 32mm waste & overflow pack suitable for VR30i, VR38i, VR42i |

Wall Mounted Wash Basins

These commercial wash basins are fully spot welded including apron to save installation time on site.



Wall Mounted Wash Basins

| CODE | ITEM | WIDTH x DEPTH x HEIGHT mm | TAP HOLES | BOWL SIZE mm | UPSTAND mm | OVERFLOW |
|-------------|------------------|---------------------------|-----------|----------------------|------------|----------|
| HB240S | A | 295 x 290 x 135 | 2 | 240 dia. x 105 deep | 25 | No |
| HB290S | B | 340 x 345 x 160 | 2 | 290 dia. x 160 deep | 25 | Yes |
| HB320S | C | 400 x 350 x 105 | 2 | 320 dia. x 105 deep | 25 | Yes |
| HB430S | D | 485 x 360 x 150 | 2 | 430 x 280 x 150 deep | 25 | Yes |
| HBCW | E – Corner basin | 300 x 300 x 150 | 2 | 245 dia. x 125 deep | 25 | Yes |
| HB335EURO | G | 400 x 342 x 230 | 2 | 335 x 225 x 263 deep | 40 | Yes |
| HB430EURO | F | 480 x 350 x 263 | 2 | 430 x 235 x 185 deep | 40 | Yes |
| HB335EURONS | H – No skirt | 383 x 300 x 185 | 2 | 335 x 225 x 120 deep | 60 | Yes |
| HBBP | Blanking plate | 45mm dia. | | | | |

Wall Mounted / Knee Operated Wash Basins

Wall mounted stainless steel wash hand basins complete with integral skirt, knee operated mixing valve, single inlet spout and hoses. A soap dispenser can be fitted or a stainless steel blanking plate supplied. This unit is fitted to the wall by keyhole slots on the back and comes complete with combined overflow waste kit. Satin finish. Please see soap dispensers on page 12.



Wall Mounted Wash Basins | Knee Operated

| CODE | ITEM | WIDTH x DEPTH x HEIGHT mm | UPSTAND mm | BOWL SIZE mm |
|-------------|--|---------------------------|------------|--------------|
| HB335EUROKV | Wall mounted, Knee operated Wash Basin | 400 x 342 x 230 | 40 | 335 x 225 |
| HB430EUROKV | Wall mounted, Knee operated Wash Basin | 480 x 350 x 263 | 40 | 430 x 235 |



Compact, Wall Mounted, Knee Operated Wash Basins | 300 mm

| CODE | ITEM | WIDTH x DEPTH mm | SPLASHBACK mm | BOWL SIZE DIA. mm |
|------------------|---|------------------|---------------|-------------------|
| HB300PFB | Compact, knee operated | 300 x 315 | 300 x 315 | 255 x 110 |
| HB300PFB-NSB | Compact, knee operated – no splashback | 300 x 315 | 50mm upstand | 255 x 110 |
| HB300PFB-WRAS | Compact, knee operated – WRAS approved | 300 x 315 | 300 x 315 | 255 x 110 |
| HB300PFB-WRASNSB | Compact, knee operated – WRAS approved, no splashback | 300 x 315 | 50mm upstand | 255 x 110 |



For Soap Dispensers and Blanking Plates please see page 12.

Accessories



Soap Dispensers

| CODE | ITEM | CONTAINER HEIGHT mm | TOTAL HEIGHT mm | CONTAINER DIA. mm |
|-----------|--------------------------|---------------------|-----------------|-------------------|
| DPSD-1000 | Soap Dispenser – Economy | 154 | 262 | 55 |
| DPSD-2000 | Soap Dispenser – Premium | 212 | 390 | 90 |

Blanking Plate

| | |
|------|----------------------------|
| HBBP | Blanking plate – 45mm dia. |
|------|----------------------------|

Basin Taps



Basin Taps with Cross heads | 1/2"



| CODE | ITEM |
|--------|--|
| 1000/D | 1/2" Chrome plated basin taps w/ cross heads – WRAS approved |



Basin Taps with Tricon heads | 1/2"



| CODE | ITEM |
|--------|---|
| 4100/D | 1/2" Chrome plated basin taps w/ tricon heads – WRAS approved |



Basin Taps with Levers | 1/2"



| CODE | ITEM |
|----------|--|
| 1100/D | 1/2" Chrome plated basin taps w/ 3" levers – WRAS approved |
| 1100/6/D | 1/2" Chrome plated basin taps w/ 6" levers – WRAS approved |



Self Closing Basin Taps | 1/2"



| CODE | ITEM |
|----------|---|
| CORM03/D | 1/2" Chrome plated, self closing basin taps – WRAS approved |

JANITORIAL



High quality grade 304 stainless steel.

Janitorial Units



Janitorial Sink Unit | 600 & 700 mm

Stainless steel janitorial sink unit with adjustable feet. Supplied complete with tap, waste kit, flexible hose fittings, grate & wall bracket.

| CODE | ITEM | LENGTH x DEPTH x HEIGHT mm |
|--------|-----------------|----------------------------|
| DP0039 | Janitorial Sink | 500 x 600 x 850 |
| DP0040 | Janitorial Sink | 500 x 700 x 850 |



Bucket Sink | 520 mm

Stainless steel bucket sink with adjustable feet. Waste, splash back and grid included.

| CODE | ITEM | LENGTH x DEPTH x HEIGHT mm |
|--------|-------------|----------------------------|
| DPBS50 | Bucket Sink | 500 x 520 x 816 |



Bib Taps with Cross Heads | 1/2"



| CODE | ITEM |
|----------|--|
| CHN40/D | Pair of 1/2" Bib taps with cross heads – WRAS Approved |
| CHN40EXT | Extension kit for CHN40/D – 50mm long |

Insectocutors

We offer a range of insectocutors successfully combining contemporary design with high specification features, ideal for commercial environments. The insectocutors are available in a range of white, stainless steel or aluminium finishes with a choice of 16w and 30w models.

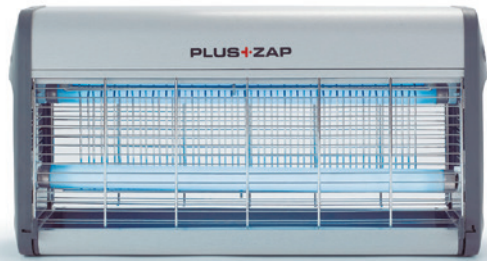
Staggered tubes create efficient light output, whilst the innovative offset killing grid creates a large, effective catch area with easier servicing. Tool free tube removal for a quick and simple service. Mains interlocked catch tray is simple to remove for quick and safe maintenance, with anti-blow out folds. Flexible mounting options for wall, desk or ceiling suspension.



Insectocutors – Premium range | 16 & 30 watt

| CODE | ITEM | H x W x D mm | COVERAGE m ² | TUBES | MATERIAL | WEIGHT kg |
|---------|--------------------------------|-----------------|-------------------------|--------------|-----------------|-----------|
| DPFK126 | Insectocutor – Premium 16 watt | 262 x 365 x 130 | 40 | 2 x TVX8-12 | Stainless steel | 3 |
| DPFK127 | Insectocutor – Premium 30 watt | 262 x 514 x 130 | 80 | 2 x TVX15-18 | Stainless steel | 3.5 |

2 year warranty **excluding tubes and starters which should be replaced every year**



Insectocutors – Economy range | 16 & 30 watt

| CODE | ITEM | H x W x D mm | COVERAGE m ² | TUBES | MATERIAL | WEIGHT kg |
|---------|--------------------------------|-----------------|-------------------------|--------------|----------------------------------|-----------|
| DPFK121 | Insectocutor – Economy 16 watt | 262 x 365 x 130 | 40 | 2 x TVX8-12 | Aluminium | 2.3 |
| DPFK122 | Insectocutor – Economy 30 watt | 262 x 514 x 130 | 80 | 2 x TVX15-18 | Aluminium | 2.5 |
| DPFK123 | Insectocutor – Economy 16 watt | 262 x 365 x 130 | 40 | 2 x TVX8-12 | Mild steel – White powder coated | 3 |



TAPS



A comprehensive range of taps available from our UK warehouse for next-day delivery. From pillar, mixer and crosshead taps to gooseneck pantry or electronic basin taps we have options to suit your every requirement.

The following pages only show a selection of the taps we can offer, so If you cannot see your required item listed please visit www.die-pat.co.uk or call us on 01327 311144 and we will be happy to assist.

Basin Taps



Basin Taps with Cross heads | 1/2"



| CODE | ITEM |
|--------|--|
| 1000/D | 1/2" Chrome plated basin taps w/ cross heads – WRAS approved |



Basin Taps with Tricon heads | 1/2"



| CODE | ITEM |
|--------|---|
| 4100/D | 1/2" Chrome plated basin taps w/ Tricon heads – WRAS approved |



Basin Taps with Levers | 1/2"



| CODE | ITEM |
|----------|--|
| 1100/D | 1/2" Chrome plated basin taps w/ 3" Levers – WRAS approved |
| 1100/6/D | 1/2" Chrome plated basin taps w/ 6" Levers – WRAS approved |



Self Closing Basin Taps | 1/2"



| CODE | ITEM |
|----------|---|
| CORM03/D | 1/2" Chrome plated, self closing basin taps – WRAS approved |

Electronic Tap

This electronic water saving tap has a microcomputer control to enable an automatic on/off motion with a 1 second time delay. The tap comes with deck mounted fittings only and is manufactured from brass with chrome plating.



| CODE | ITEM |
|-------------|--|
| DPMS42D | Electronic Deck Mounted Tap |
| DPMS42D/KIT | Electronic Deck Mounted Tap with Mixer Valve |
| DPGR100 | Mixer Valve |

FEATURES

- Hands free and Hygienic
- Water saving
- Infrared sensor
- Microcomputer control
- Automatic on/off switch
- 1 second time delay
- Brass with chrome plate construction
- Non-adjustable for rate at 6.5L/min at 0.1 Mpa
- Battery powered - uses 4 x AA batteries (not included)



Catering Sink Taps – Deck Mounted



High Neck Pillar Tap with Cross Heads | 3/4" | Hot

| CODE | ITEM |
|----------|--|
| 2010/01H | 3/4" High neck pillar tap – Hot Not WRAS approved |



High Neck Pillar Tap with Cross Heads | 3/4" | Cold

| CODE | ITEM |
|----------|---|
| 2010/01C | 3/4" High neck pillar tap – Cold Not WRAS approved |



Basin Pillar Taps with Cross heads | 1/2"



| CODE | ITEM |
|--------|---|
| 2000/D | 1/2" Pillar taps with cross heads – WRAS approved |



Basin Pillar Taps with Tricon heads | 1/2"



| CODE | ITEM |
|--------|--|
| 4000/D | 1/2" Pillar taps with tricon heads – WRAS approved |



Basin Pillar Taps with 3" & 6" Levers | 1/2"



| CODE | ITEM |
|--------|---|
| 2100/D | 1/2" Pillar taps with 3" levers – WRAS approved |
| 2200/D | 1/2" Pillar taps with 6" levers – WRAS approved |



Mixer Tap with Cross Heads | 1/2" | Bi-flow



Tap holes: 22mm

| CODE | ITEM |
|--------|---|
| 3007/D | 1/2" mixer tap with cross heads – 7" bi-flow swivel spout |



Mixer Tap with Tricon Heads | 1/2" | Bi-flow



Tap holes: 22mm

| CODE | ITEM |
|--------|--|
| 4200/D | 1/2" mixer tap with tricon heads – 8" bi-flow swivel spout |



Mixer Tap with 3" & 6" Levers | 1/2" | Bi-flow



Tap holes: 22mm

| CODE | ITEM |
|----------|---|
| 6100/D | 1/2" mixer tap with 3" levers – 7" bi-flow swivel spout |
| 6100/6/D | 1/2" mixer tap with 6" levers – 7" bi-flow swivel spout |



Monobloc Mixer Tap with Tricon Heads | 1/2" | Bi-flow



Tap hole: 32mm

| CODE | ITEM |
|--------|--|
| 4500/D | Monobloc mixer tap w/ tricon heads – 8" bi-flow swivel spout |



Monobloc Mixer Tap with 3" Levers | 1/2" | Bi-flow



Tap hole: 32mm

| CODE | ITEM |
|--------|---|
| 6500/D | Monobloc mixer tap w/ 3" levers – 8" bi-flow swivel spout |

Pantry Taps – Deck Mounted

Taps



Pantry Tap with Swing Spout | 6", 8", 10" & 12"

Centres: 180-200mm

| CODE | ITEM |
|----------|--|
| DP617006 | Double deck mounted pantry tap – 6" swing spout |
| DP617008 | Double deck mounted pantry tap – 8" swing spout |
| DP617010 | Double deck mounted pantry tap – 10" swing spout |
| DP617012 | Double deck mounted pantry tap – 12" swing spout |



Pantry Tap with Gooseneck Spout | 6" & 8"

Centres: 180-200mm

| CODE | ITEM |
|----------|---|
| DP617001 | Double deck mounted pantry tap – 8" gooseneck spout |
| DP617002 | Double deck mounted pantry tap – 6" gooseneck spout |



Pantry Tap with Double Jointed Spout

Centres: 180-200mm

| CODE | ITEM |
|----------|--|
| DP617024 | Double deck mounted – 24" double jointed spout |



Monobloc Pantry Tap with Double Jointed Spout

Tap hole: 32mm

| CODE | ITEM |
|----------|--|
| DP519024 | Deck mounted monobloc – 24" double jointed spout |



Monobloc Pantry Tap with Swing Spout | 6", 8", 10" & 12"

Tap hole: 32mm

| CODE | ITEM |
|----------|--|
| DP519006 | Deck mounted monobloc pantry tap – 6" swing spout |
| DP519008 | Deck mounted monobloc pantry tap – 8" swing spout |
| DP519010 | Deck mounted monobloc pantry tap – 10" swing spout |
| DP519012 | Deck mounted monobloc pantry tap – 12" swing spout |



Monobloc Pantry Tap with Gooseneck Spout | 6" & 8"

Tap hole: 32mm

| CODE | ITEM |
|----------|---|
| DP519001 | Deck mounted monobloc pantry tap – 8" gooseneck spout |
| DP519002 | Deck mounted monobloc pantry tap – 6" gooseneck spout |



Sink Mixer Tap with 3" Levers | Divided Flow



Centres: 160-240mm

| CODE | ITEM |
|----------|---|
| 6400/3/D | Sink mixer tap with 3" levers – Divided flow swivel spout |



Sink Mixer Tap with 6" Levers | Divided Flow



Centres: 160-240mm

| CODE | ITEM |
|----------|---|
| 6400/6/D | Sink mixer tap with 6" levers – Divided flow swivel spout |



Single Monobloc Pantry Tap with Swing Spout | 6", 8", 10" & 12"

Tap hole: 32mm

| CODE | ITEM |
|----------|---|
| DP649006 | Single, deck mounted monobloc tap – 6" swing spout |
| DP649008 | Single, deck mounted monobloc tap – 8" swing spout |
| DP649010 | Single, deck mounted monobloc tap – 10" swing spout |
| DP649012 | Single, deck mounted monobloc tap – 12" swing spout |



Fixed Spout

| CODE | ITEM |
|----------|-------------|
| DP11X120 | Fixed spout |

Bubbler Tap



Bubbler Tap

Hole in deck: 32mm



| CODE | ITEM |
|------|-------------------------------|
| DPWB | Water bubbler – WRAS approved |

Bottle Filler



Bottle Filler



| CODE | ITEM |
|------|-------------------------------|
| DPBF | Bottle filler – WRAS approved |

Soap Dispensers



Soap Dispensers

| CODE | ITEM | CONTAINER HEIGHT mm | TOTAL HEIGHT mm | CONTAINER DIA. mm |
|-----------|--------------------------|---------------------|-----------------|-------------------|
| DPSD-1000 | Soap Dispenser – Economy | 154 | 262 | 55 |
| DPSD-2000 | Soap Dispenser – Premium | 212 | 390 | 90 |

Tap Parts



Connectors

| CODE | ITEM |
|----------|------------------------|
| DP50X123 | Wall mounted connector |
| DP50X125 | Deck mounted connector |



Gooseneck Swing Spout | 6" & 8"

| CODE | ITEM | SPREAD mm | HEIGHT mm |
|--------|----------------------|-----------|-----------|
| DP11X2 | Gooseneck spout – 6" | 150 | 264 |
| DP11X1 | Gooseneck spout – 8" | 200 | 290 |



Swing Spout | 6", 8", 10" & 12"

| CODE | ITEM | LENGTH mm |
|---------|-------------------|-----------|
| DP11X6 | Swing spout – 6" | 152 |
| DP11X8 | Swing spout – 8" | 203 |
| DP11X10 | Swing spout – 10" | 254 |
| DP11X12 | Swing spout – 12" | 305 |



Double Jointed Swing Spout | 24"

| CODE | ITEM | LENGTH mm |
|---------|----------------------------------|-----------|
| DP009DJ | Double jointed swing spout – 24" | 610 |

PRE-RINSE SPRAYS



H2O WRAS approved pre-rinse units are heavy duty and suitable for all commercial kitchen environments. Straight arm, flexible hose and mini units are held in stock in a variety of options, with accessories and add-on taps also available.

Pre-Rinse Units



Pre-Rinse Unit with Flexible Hose | Monobloc

Pre-Rinse units are supplied with a wall bracket. Accessories and add-on taps are available for all units. The add-on tap shown is sold separately.

| CODE | ITEM |
|---------|--|
| DP501BR | Pre-Rinse unit with flexible hose – Monobloc |

Pre-Rinse Unit with Flexible Hose | Double Wall Mounted

Pre-Rinse units are supplied with a wall bracket. Accessories and add-on taps are available for all units. The add-on tap shown is sold separately.

| CODE | ITEM |
|---------|---|
| DP531BR | Pre-Rinse unit with flexible hose – Double wall mounted |



Pre-Rinse Unit with Flexible Hose | Double Deck Mounted

Pre-Rinse units are supplied with a wall bracket. Accessories and add-on taps are available for all units. The add-on tap shown is sold separately.

| CODE | ITEM |
|---------|---|
| DP601BR | Pre-Rinse unit with flexible hose – Double deck mounted |



Pre-Rinse Unit with Flexible Hose | Single Deck Mounted

Pre-Rinse units are supplied with a wall bracket. Accessories and add-on taps are available for all units. The add-on tap shown is sold separately.

| CODE | ITEM |
|---------|---|
| DP631BR | Pre-Rinse unit with flexible hose – Single deck mounted |



MINI Pre-Rinse Unit with Flexible Hose | Deck Mounted

The H2O MINI Pre-Rinse unit provides the same flexibility and performance as the standard Pre-Rinse unit, but is suitable when space or height restrictions apply. The unit is supplied with an add-on tap and 6" swing nozzle.

| CODE | ITEM |
|----------|---|
| DP50MN-2 | MINI Pre-Rinse unit with flexible hose – Monobloc |



MINI Pre-Rinse Unit with Flexible Hose | Double Deck Mounted

The H2O MINI Pre-Rinse unit provides the same flexibility and performance as the standard Pre-Rinse unit, but is suitable when space or height restrictions apply. The unit is supplied with an add-on tap and 6" swing nozzle.

| CODE | ITEM |
|----------|--|
| DP60MN-2 | MINI Pre-Rinse unit with flexible hose – Double deck mounted |



Pre-Rinse Unit with Flexible Hose | Single Wall Mounted

Pre-Rinse units are supplied with a wall bracket. Accessories and add-on taps are available for all units. The add-on tap shown is sold separately.

| CODE | ITEM |
|---------|---|
| DP691BR | Pre-Rinse unit with flexible hose – Single wall mounted |

Pre-Rinse Unit Add-on Bowl Filler tap | 6", 8" & 12"

| CODE | ITEM |
|----------|---|
| DP557006 | Pre-Rinse unit add-on bowl filler tap – 6" |
| DP557008 | Pre-Rinse unit add-on bowl filler tap – 8" |
| DP557012 | Pre-Rinse unit add-on bowl filler tap – 12" |



Pre-Rinse Unit Spray Gun

| CODE | ITEM |
|--------|---------------------|
| DP50Y2 | Pre-Rinse spray gun |

Pre-Rinse Unit Spray Gun Repair Kit

| CODE | ITEM |
|--------|--------------------------------|
| DP5002 | Pre-Rinse spray gun repair kit |



Pre-Rinse Unit Wall Bracket | 6" & 12"

| CODE | ITEM |
|----------|------------------------------|
| DP50Y20 | Pre-Rinse wall bracket – 6" |
| DP50Y020 | Pre-Rinse wall bracket – 12" |



Pre-Rinse Unit Riser Pipe with Wall Hook | 18"

| CODE | ITEM |
|---------|---|
| DP50X77 | Pre-Rinse riser pipe with wall hook – 18" |



Pre-Rinse Unit Hose with Grip

| CODE | ITEM |
|----------|---|
| DP50Y004 | Pre-Rinse unit stainless steel hose with grip – 44" |
| DP50Y10 | Pre-Rinse unit stainless steel hose – No grip – 38" |



Pre-Rinse Unit Plastic Hose Grip

| CODE | ITEM |
|---------|-----------------------------|
| DP50X25 | Pre-Rinse unit plastic grip |



Pre-Rinse Unit Spring Retainer & Spring

| CODE | ITEM |
|---------|--------------------------------|
| DP50X32 | Pre-Rinse unit spring retainer |
| DP50X33 | Pre-Rinse unit spring |



Pre-Rinse Unit Valve Replacement Kit

| CODE | ITEM |
|---------|--------------------------------------|
| DP50Y67 | Pre-Rinse unit valve replacement kit |

Please order by 4pm for next-day delivery. Timed and special deliveries can also be arranged.

KLARCO Retractable Hose Reel Units

MAXI Reel with NITO-2 Combi spray gun

A professional spray gun ("ECO/R" or alternatively an extended spray gun), connected to a retractable (food service approved) rubber hose. The shell, mounting flanges and screws are stainless steel (AISI304). Designed for easy installation, saving space and guaranteeing maximum hygiene. An ideal accessory for cleaning large kitchens or food service rooms; supermarkets, butchers etc. Available as standard with a 15 metre hose. Other sizes available, please call our sales office on 01327 311144.

| TECHNICAL FEATURES |
|--|
| • Max. operating temperature: 60°C |
| • Max. operating pressure: 850 kPa (8.5 Bar) |
| • Water output at 300 kPa: 12 litres/min |
| • M15 weight: 18kg (approx.) |



NITO-2 Combi Spray Gun with Adjustable Spray | Heavy Duty

Heavy duty spray gun for industrial cleaning. Adjustable spray, from narrow jet to 60° wide. Trigger with safety lock to prevent accidental spraying. Heat insulated handle. 1/2" female threaded inlet. Max water temp: 90°C. Max pressure: 1 MPa (145 psi).

| CODE | ITEM |
|---------------|------------------------|
| OR.P449.00.00 | NITO-2 Combi spray gun |



Nozzle Extension for NITO Spray Guns | 45 cm

45cm Nozzle extension for NITO Spray guns. Interchangeable with NITO-1 and NITO-2 spray nozzles.

| CODE | ITEM |
|---------------|---|
| OR.P148.00.00 | Nozzle extension for NITO-1 & NITO-2 Spray guns |



M15 MAXI Reel with NITO-2 Combi Spray Gun | 15m Hose

Retractable swivel hose reel unit for wall or ceiling mounting.

| CODE | ITEM |
|------------|---|
| 5R.M15.449 | M15 Maxi reel with NITO-2 combi spray gun |
| 5R.M15.480 | M15 Maxi reel with NITO-2 combi spray gun & jet extension |

MINI Reel Retractable Hose Units

A professional spray gun ('ECO/R' with 3/8" Female inlet), connected to a 150cm long retractable (food service approved) rubber hose with a 1/4 inch stop valve. Cased inside a stainless steel (AISI304) shell. Designed for easy installation, saving space and guaranteeing maximum hygiene.

TECHNICAL FEATURES

- Max. operating temperature: 90°C
- Max. operating pressure: 600 kPa (6 Bar)
- Water output at 300 kPa: 8 litres/min
- M15 weight: 3kg (approx.)



MINI Reel Retractable Hose Unit | Standard

Retractable hose unit for under sink and combi ovens.

| CODE | ITEM |
|------------|--|
| MOD9200000 | Mini Reel retractable hose unit – Standard model |

MINI Reel Retractable Hose Unit | Protected

Retractable hose unit for under sink and combi ovens.

| CODE | ITEM |
|------------|---|
| MOD9200100 | Mini Reel retractable hose unit – Protected model |



New ECO/R Spray Gun

ECO/R Handshower made entirely from materials suitable for contact with drinking water. Ergonomic design and progressive water flow. Water hammer-proof valve. Available with push-button control. 3/8" female threaded inlet. Max water temp: 65°C. Max pressure: 0.65 MPa (94 psi).

| CODE | ITEM |
|---------------|--|
| OR.P043.00.00 | ECO/R spray gun with 3/8" female inlet |



NITO-1 Combi Spray Gun with Adjustable Spray | Light

Light spray gun for industrial cleaning. Adjustable spray, interchangeable with extension. Ergonomic design. G 1/2" female threaded inlet. Max water temp: 40°C. Max pressure: 0.6 MPa (87 psi).

| CODE | ITEM |
|---------------|---|
| OR.P146.00.00 | NITO-1 Combi spray gun with 1/2" female inlet |

Please order by 4pm for next-day delivery. Timed and special deliveries can also be arranged.

SINK ACCESSORIES



Die-Pat's range of polypropylene sink accessories includes self-closing waste valves, inlet tubes, bottle traps, P & S traps, and space saving plumbing kits.

FEATURES

- Allows full use of storage space below sink bowls
- Universal compression outlet suits all plastic, copper and lead pipe
- Supplied with an 1-1/2" x 75mm water seal tubular swivel 'P' trap and blanking plugs
- Can accept discharge hose(s) of domestic appliances
- Manufactured in polypropylene



Sink Kit for Single Bowl Unit

Single bowl space saver plumbing kit. Supplied with an 1-1/2" x 75mm water seal tubular swivel 'P' trap and blanking plugs.

| CODE | ITEM |
|--------|-------------------------------|
| DPSKSB | Sink kit for single bowl unit |



Sink Kit for Double Bowl Unit

Double bowl space saver plumbing kit. Supplied with an 1-1/2" x 75mm water seal tubular swivel 'P' trap and blanking plugs.

| CODE | ITEM |
|--------|-------------------------------|
| DPSKDB | Sink kit for double bowl unit |



Sink Kit for Triple Bowl Unit

Triple bowl space saver plumbing kit. Supplied with an 1-1/2" x 75mm water seal tubular swivel 'P' trap and blanking plugs.

| CODE | ITEM |
|--------|-------------------------------|
| DPSKTB | Sink kit for triple bowl unit |



Self-Closing Waste Valve | 1-1/2"

Self-closing waste valve made from polypropylene. BSP female inlet nut x universal compression outlet. Can be fitted in horizontal or vertical position. Length: 153mm

| CODE | ITEM |
|-------------|-----------------------------------|
| DPSCWV/1.5" | Self-closing waste valve – 1-1/2" |



Space Saving Inlet Tube | 1-1/2"

Space saving trap inlet made from polypropylene. Designed to allow full use of space below the sink bowl.

| CODE | ITEM |
|-------------|----------------------------------|
| DPSSIT/1.5" | Space saving inlet tube – 1-1/2" |

Traps



FEATURES

- 75mm water seal
- Silicone valve prevents foul odour or sewer gas entering the building if the water seal has evaporated which may occur due to lack of use through under occupancy
- Multifit compression outlet suits all plastic, copper & lead pipe
- Anti-syphon valve neutralises negative syphonic pressure and eliminates gurgling
- Manufactured in polypropylene

Bottle Trap with Silicone | 1-1/2"

| CODE | ITEM |
|-------------------|------------------------------------|
| DPBOTTLETRAP/1.5" | Bottle trap with silicone – 1-1/2" |



Adjustable 'P' Trap

75mm water seal adjustable inlet tubular swivel 'P' trap w/ multi-fit outlet. Made from polypropylene. Suitable for all plastic, copper and lead pipe.

| CODE | ITEM |
|---------------|-------------------------------------|
| DPPTRAP/1.25" | Adjustable 'P' trap – 1-1/4" (32mm) |
| DPPTRAP/1.5" | Adjustable 'P' trap – 1-1/2" (38mm) |
| DPPTRAP/2" | Adjustable 'P' trap – 2" (50mm) |



'S' Trap

75mm water seal tubular swivel 'S' trap with multi-fit outlet. Made from polypropylene. Suitable for all plastic, copper and lead pipe.

| CODE | ITEM |
|---------------|--------------------------|
| DPSTRAP/1.25" | 'S' trap – 1-1/4" (32mm) |
| DPSTRAP/1.5" | 'S' trap – 1-1/2" (38mm) |
| DPSTRAP/2" | 'S' trap – 2" (50mm) |

HOSES



We offer a range of gas and water hoses certified for use in the commercial food service industry. Standard size hoses are available from stock for next-day delivery, and we also offer a bespoke hose manufacturing service to suit individual requirements.

Please contact us on 01327 311144 for more details.

Gas Hoses

Fully welded corrugated stainless-steel gas hose assemblies manufactured under rigorous controls to provide top quality and sustained reliability for the commercial food service sector. Approved for all 3 gas families in bore sizes of 1/2" and 3/4" from stock (1" bore available on request). Tested and certified in accordance with BS669 Part 2:1997. Braided and bayonet hoses available.



Yellow Gas Hose | 1000 mm, 1250 mm & 1500 mm

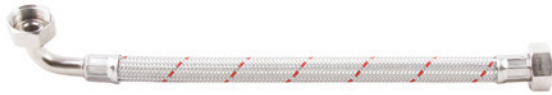
Fully welded corrugated stainless steel hose assembly with a quick release valve coupler, which cuts off the supply of gas when disconnected.

| CODE | HOSE LENGTH mm | BORE SIZE |
|-----------|----------------|-------------------------|
| GH12-1000 | 1000 | 1/2" QC (Quick Connect) |
| GH20-1000 | 1000 | 3/4" QC (Quick Connect) |
| GH25-1000 | 1000 | 1" QC (Quick Connect) |
| GH12-1250 | 1250 | 1/2" QC (Quick Connect) |
| GH20-1250 | 1250 | 3/4" QC (Quick Connect) |
| GH25-1250 | 1250 | 1" QC (Quick Connect) |
| GH12-1500 | 1500 | 1/2" QC (Quick Connect) |
| GH20-1500 | 1500 | 3/4" QC (Quick Connect) |
| GH25-1500 | 1500 | 1" QC (Quick Connect) |

Water Hoses

We offer a choice of braided stainless or white food grade water hoses (certified to BS6920, KTW W270 and DVGW VP543 standards). Both varieties are WRAS approved and have standard sizes available from stock for next-day delivery.

We also offer a bespoke hose service to suit individual requirements which can be manufactured in 2-3 days, please contact us on 01327 311144 for more details.



Braided Water Hoses

Stainless steel braided water hoses with flat female elbow.
Bore: 13mm & 19mm

| CODE | HOSE mm | ELBOW | BORE mm |
|---------------------|---------|-------|---------|
| WH12FFSF1.213FFFE12 | 1200 | 1/2" | 13 |
| WH12FFSF1.513FFFE12 | 1500 | 1/2" | 13 |
| WH34FFSF1.213FFFE34 | 1200 | 3/4" | 13 |
| WH34FFSF1.513FFFE34 | 1500 | 3/4" | 13 |
| WH34FFSF2.013FFFE34 | 2000 | 3/4" | 13 |
| WH34FFSF2.513FFFE34 | 2500 | 3/4" | 13 |
| WH34FFSF1.219FFFE34 | 1200 | 3/4" | 19 |
| WH34FFSF1.519FFFE34 | 1500 | 3/4" | 19 |

White Foodgrade Aquavend Water Hoses

White foodgrade Aquavend metal water hoses with flat faced swivel female elbow. Brass end fittings. Loose EPDM washers. Bore: 12mm

| CODE | HOSE mm | ELBOW | BORE mm |
|-----------|---------|-------|---------|
| WHAM1.012 | 1000 | 3/4" | 12 |
| WHAM1.212 | 1200 | 3/4" | 12 |
| WHAM1.512 | 1500 | 3/4" | 12 |
| WHAM2.012 | 2000 | 3/4" | 12 |

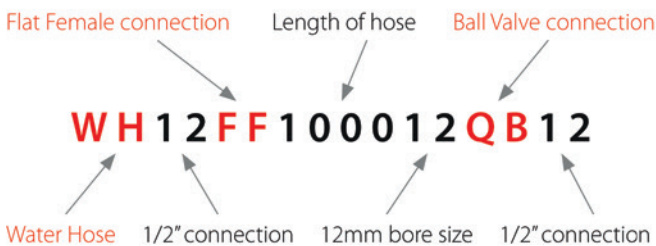
FEATURES

- Reinforced, brilliant white, smooth, kink resistant PVC hose
- Co-extruded, glossy black, hytrel liner that does not support microbiological growth
- Foodgrade hose suitable for drinks vending machines, water softeners and water filter kits
- Temperature range : 0°C to +65°C at 6bar
- Suitable for potable water
- Available with pex liner or silicone liner

How to order Water Hoses from Die-Pat

We also offer a bespoke hose service to suit individual requirements which can be manufactured in 2-3 days, please contact us on 01327 311144 for more details.

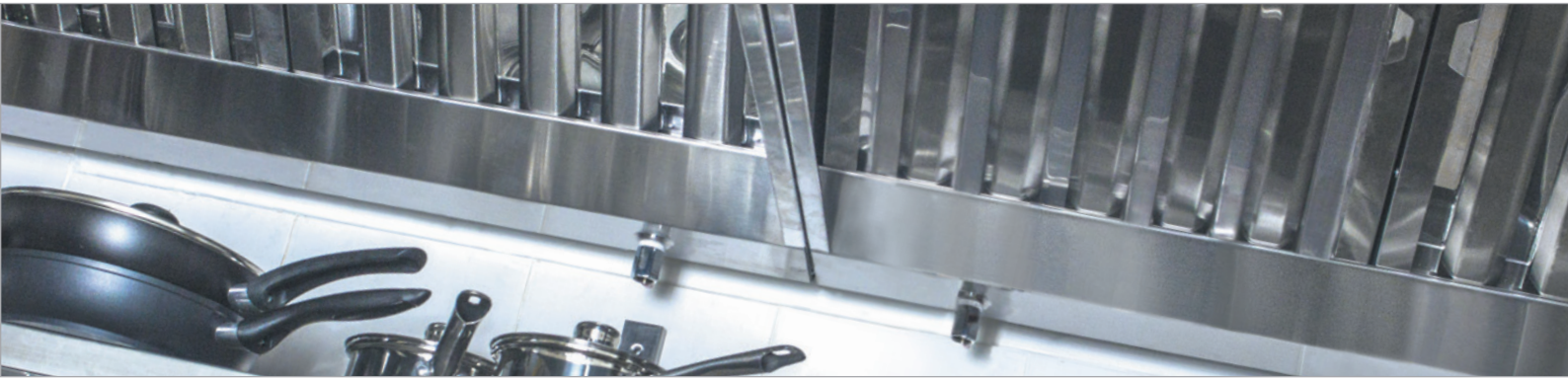
When ordering the following items please specify the following requirements prefixed with WH – for example: **WH12FF100012QB12**



1. Size of connection:
FF = Flat Female
FM = Flat Male
QB = Ball Valve
QC = Quick Connect
EL = Elbow
FC = Female Cone
CP = Compression
CPIV = Compression with Isolation Valve
CPF = Chrome Push Fit
FFSF = Flat Faced Swivel Female
FFFE = Flat Faced Female Elbow
2. Length of hose in mm
3. Bore size: 9, 12, 19
4. Type of connection
5. Size of connection

Please order by 4pm for next-day delivery. Timed and special deliveries can also be arranged.

CANOPY HOOD ACCESSORIES



Die-Pat's range of canopy hood accessories includes canopy hood lights, stainless steel baffle filters and our patented baffle filter removal tool.

For additional items please see www.die-pat.co.uk or call our sales team on 01327 311144.

Baffle Filters

Working in conjunction with the fire suppression system, grease filters provide a strong defence against duct system fires. Baffle filters function by forcing grease-saturated air to change direction as it rises through the filter. Because the grease droplets cannot change direction as rapidly as the air carrying them, they end up condensing to the metal blades and then subsequently draining into the filter tray. This method drastically reduces the risk of spreading flames should a fire break out on the cooking surface below. Additionally, because grease is filtered into a tray, there is no build-up which would hinder airflow and function over time.

Our F92 range of polished stainless steel baffle filters are easily cleaned by soaking or dishwashing and comply with the DW172 standard.

Available from stock for next-day delivery.



Baffle Grease Filters | Polished finish

Stainless steel baffle filters suitable for all commercial applications. Strong construction. Frame with handles and drainage holes. Easily cleaned by soaking or dishwashing.

| CODE | NOMINAL SIZE | ACTUAL SIZE (H x W x D) mm | WEIGHT kg |
|---------|--------------|----------------------------|-----------|
| F922020 | 20" x 20" | 495 x 495 x 48 | 1.80 |
| F921818 | 18" x 18" | 445 x 445 x 48 | 1.50 |
| F921616 | 16" x 16" | 395 x 395 x 48 | 1.35 |
| F921620 | 16" x 20" | 395 x 495 x 48 | 1.70 |
| F922016 | 20" x 16" | 495 x 395 x 48 | 1.70 |
| F921020 | 10" x 20" | 245 x 495 x 48 | 1.10 |

Baffle Filter Removal Tool

Our baffle filter removal tool has been specifically designed to eliminate the health and safety risks associated with filter removal from commercial kitchen canopies. Its patented design enables operatives to quickly and safely remove filters for cleaning.

FEATURES

- Quick-Release sliding prongs adjust to suit major baffle filter brands
- Quick-Release adjustable head adjusts to suit different filter housing angles
- Lightweight aluminium construction for ease of handling
- Long reach 1500mm pole including grease resistant rubber grip handles
- Folds flat for storage
- Wall mountable (optional wall bracket available)

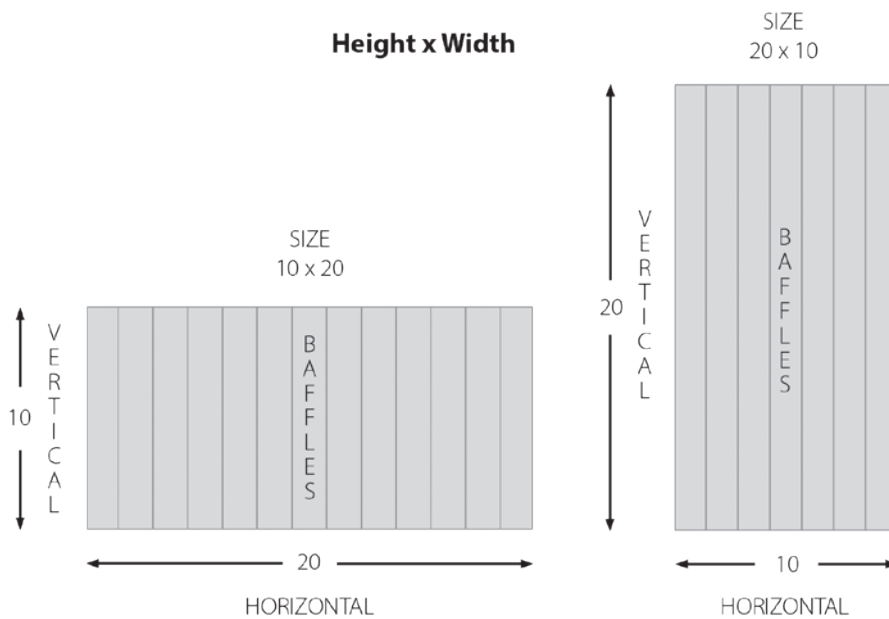


Baffle Filter Removal Tool | 1500 mm

| CODE | ITEM |
|------|--|
| FRT | Baffle filter removal tool with quick release prongs |

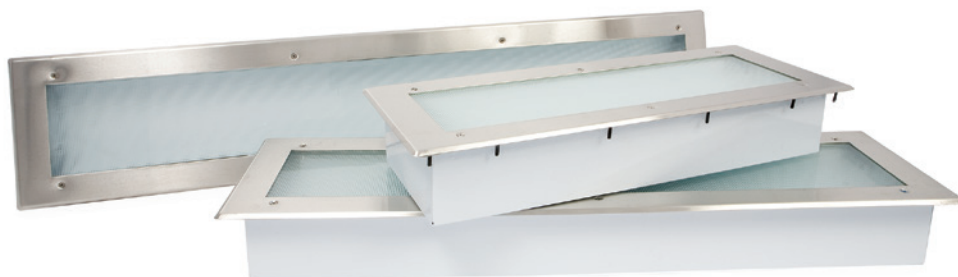
How to order Grease Filters from Die-Pat

Filters **MUST** be installed with baffles running in the vertical (top to bottom) position so the grease will run down the baffles to the grease trough in the hood. Standard sizes are ordered with the **VERTICAL** (top to bottom) dimension first, then the **HORIZONTAL** (left to right) dimension.



Fluorescent Canopy Hood Lights

Our L82 range of fluorescent canopy hood lights are of the highest quality and reliability. Manufactured from satin finish stainless steel with a tempered, prismatic glass diffuser, they are low profile for limited overhead clearance applications. Listed to 80°C with a 50,000 hours lamp life they meet NFPA and NEC 410 requirements and are NSF approved.



Fluorescent Canopy Hood Lights | Complete with Tubes

Recessed fluorescent canopy hood lights, available in 2ft, 3ft and 4ft lengths. For use in commercial cooking hoods with a low profile for limited overhead clearance. Body in stainless steel and baked white enamel, tempered prismatic glass diffuser, trim in one piece satin stainless steel.

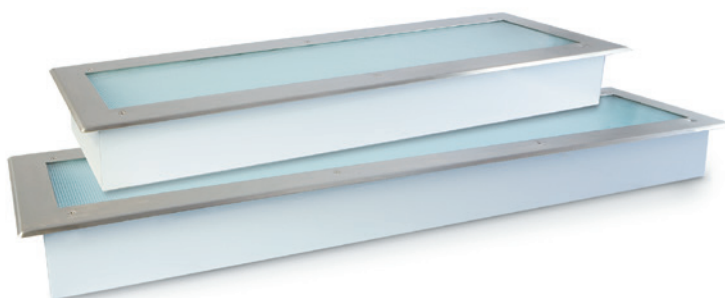
| CODE | ITEM | W x L x H mm (INCL. TRIM) | MOUNTING CUT-OUT mm | FIXING HOLES |
|------------|-------------------------------------|---------------------------|---------------------|--------------|
| L821020/WT | Fluorescent canopy hood light – 2ft | 260 x 667 x 114 | 216 x 622 | 12 |
| L821030/WT | Fluorescent canopy hood light – 3ft | 260 x 972 x 114 | 216 x 927 | 14 |
| L821040/WT | Fluorescent canopy hood light – 4ft | 260 x 1276 x 114 | 216 x 1232 | 14 |

FEATURES

- Recessed fluorescent light for use in commercial cooking hoods
- Low profile 4-1/2" (114mm) high – for limited overhead clearance applications
- Listed to 80°C
- Diffuser: Crystal tempered prismatic glass (prisms on inside of fixture), mounted in a stainless steel face frame with special sealing gasketing.
- Diffuser secured to body with stainless steel screws for easy servicing
- Body: Stainless steel with baked white enamel finish, providing a minimum 87% diffused reflection
- Tubes also available separately

LED Canopy Hood Lights

Available in 3ft and 4 ft lengths. Contact our Sales department on 01327 311144 for more details.



Moulding & Dividers

FEATURES

- Stainless steel construction, satin finish
- Accepts 1.6mm (1/16") wall flashing material
- Cap strip has hemmed edge for safety
- Designed specifically for stainless steel joining
- Individually plastic sleeved for protection of finish
- 2.5M to suit standard sheet size



Cap Strip | for 1.6 mm

Stainless steel cap strip for 1.6mm (1/16") material thickness. Bright finish.

| CODE | ITEM | LENGTH mm |
|-------------|-----------------------|-----------|
| J631451-2.5 | Cap strip – for 1.6mm | 2500 |



Divider Bar with Galvanised Back Plate | for 1.6 mm

Stainless steel divider bar with galvanised backplate for 1.6mm (1/16") material thickness. Bright finish.

| CODE | ITEM | LENGTH mm |
|-------------|-----------------------|-----------|
| J641450-2.5 | Cap strip – for 1.6mm | 2500 |

Silicone Sealant



FEATURES

- 305ml
- Available in clear, bright aluminium, white, black and red (hi-temp)
- Fits all standard caulking guns
- Furnished with removal tip
- FDA approved

Silicone Sealant | 305 ml

| CODE | ITEM | COLOUR | MAX SERVICE TEMP. | BOXED QUANTITY |
|---------|--|-------------|-------------------|----------------|
| M901010 | Silicone sealant – 305ml | Clear | 200°C | 12 tubes |
| M901012 | Silicone sealant – 305ml | Aluminium | 200°C | 12 tubes |
| M901014 | Silicone sealant – 305ml | White | 200°C | 12 tubes |
| M901016 | Silicone sealant – 305ml | Black | 200°C | 12 tubes |
| M901018 | Silicone sealant – 305ml | Hi Temp Red | 260°C | 12 tubes |
| M90CG | Caulking Gun – Mild steel plated. Ratchet operated for continuous flow. Fits all standard silicone tubes. Nozzle cutter. | | | |

FRONT OF HOUSE



From coffee ground hoppers, knock-out drawers and scrap rings to plate lowerators and glass, jug & container rinsers, we stock an extensive range of front of house products in our UK warehouse for next-day delivery.

Coffee Ground Hoppers

Our easy to install, high quality, modern units are available from stock for next-day delivery. They are robust and hygienic with removable components for ease of cleaning.



Coffee Ground Hopper – Double

A double coffee ground hopper complete with knock-out bar.

Coffee Ground Hopper – Single

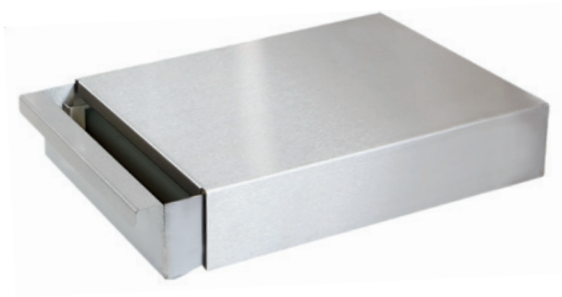
A single coffee ground hopper complete with knock-out bar.

| CODE | ITEM | WIDTH x DEPTH x HEIGHT mm | CAPACITY litres | COUNTER CUT-OUT SIZE mm |
|------|-----------------------------|---------------------------|-----------------|-------------------------|
| AG14 | Double coffee ground hopper | 377 x 379 x 598 | 18 | 354 x 573 |
| AG12 | Single coffee ground hopper | 377 x 233 x 299 | 8 | 354 x 276 |

Please order by 4pm for next-day delivery. Timed and special deliveries can also be arranged.

Coffee Knock Out Drawers

In a choice of 2 designs, our coffee knock out drawers are manufactured from 304 stainless steel.



Coffee Knock Out Drawers

Coffee knock out drawers manufactured from stainless steel.

| CODE | ITEM | HEIGHT x WIDTH x LENGTH mm | BAR |
|-----------|--|----------------------------|--------|
| CKD360 | Coffee knock out drawer – Standard table top | 74 x 251 x 355 | Nylon |
| CKD360/SP | Coffee knock out drawer – Standard table top | 74 x 251 x 355 | Rubber |
| AP17 | Coffee knock out drawer – Premium inset | 164 x 377 x 431 | TB311 |



Knock Out Bar | Suitable for AG Range

| CODE | ITEM | LENGTH mm |
|-------|---|-----------|
| TB311 | Knock out bar with clips for AG12, AG14, AP17 | 310 |
| KOBAR | Rubber knock out bar for AG3 | 322 |



Knock Out Bars | Suitable for CKD360

| CODE | ITEM | LENGTH mm |
|-----------|---------------------------------|-----------|
| CKD360/KB | Nylon knock out bar for CKD360 | 240 |
| 15-0014 | Rubber knock out bar for CKD360 | 240 |

Scrap Rings

Solid rubber & stainless-steel scrap rings.



Scrap Rings | Grey Rubber

Solid rubber scrap rings to fit 5'-3/4" (146mm) opening.

| CODE | ITEM | HEIGHT mm | TOP DIA. mm | BASE DIA. mm |
|------------|-----------------------------------|----------------------|-------------|--------------|
| J929360 | Grey rubber scrap ring – Cylinder | 73 (Excl. base) | 170 | 146 |
| J925000 | Grey rubber scrap ring – Funnel | 76 (Excl. base) | 225 | 146 |
| J921000/01 | Stainless steel scrap ring | 133 (Total), 6 (Lip) | 178 | 152 |



Inset Scrap Ring | Stainless Steel

Stainless steel scrap chute to fit 6" (152mm) opening.

Undertable Drawers

Stackable stainless steel undertable drawer 1/1GN size with container depths of 100mm or 150mm. Choice of D-shaped handle or stainless steel flush pull.



Undertable Drawer | 100 mm deep container

Stainless steel undertable drawer assembly with full size gastronorm container. Designed to be easily stackable. The container can be easily removed for cleaning. Front panel: 18mm thick.

Undertable Drawer | 150 mm deep container

Stainless steel undertable drawer assembly with full size gastronorm container. Designed to be easily stackable. The container can be easily removed for cleaning. Front panel: 18mm thick.

| CODE | CONTAINER DEPTH mm | UNIT HEIGHT mm | UNIT WIDTH mm | UNIT DEPTH mm | HANDLE |
|-------------|--------------------|----------------|---------------|---------------|------------|
| P150-100/02 | 100 | 115 | 390 | 530 | D-shaped |
| P163-100/02 | 100 | 115 | 390 | 530 | Flush pull |
| P150-150/02 | 150 | 165 | 390 | 530 | D-shaped |
| P163-150/02 | 150 | 165 | 390 | 530 | Flush pull |

Undertable Lockable Drawers



Undertable Drawer with Lock | 100 mm deep container

Stainless steel lockable undertable drawer assembly with full size gastronorm container. Designed to be easily stackable. The container can be easily removed for cleaning. Front panel: 18mm thick.

Undertable Drawer with Lock | 150 mm deep container

Stainless steel lockable undertable drawer assembly with full size gastronorm container. Designed to be easily stackable. The container can be easily removed for cleaning. Front panel: 18mm thick.

| CODE | CONTAINER DEPTH mm | UNIT HEIGHT mm | UNIT WIDTH mm | UNIT DEPTH mm | HANDLE |
|------------|--------------------|----------------|---------------|---------------|------------|
| P150-100/L | 100 | 115 | 390 | 530 | D-shaped |
| P163-100/L | 100 | 115 | 390 | 530 | Flush pull |
| P150-150/L | 150 | 165 | 390 | 530 | D-shaped |
| P163-150/L | 150 | 165 | 390 | 530 | Flush pull |

Glass Rinsers and Filling Stations

ITEM
COMING
SOON

Front of House



Glass Rinsing Station

| CODE | WIDTH x DEPTH x HEIGHT mm |
|-----------|---------------------------|
| DPGR98551 | 454 x 270 x 26 |



Glass Rinsing & Filling Station

| CODE | WIDTH x DEPTH x HEIGHT mm |
|-----------|---------------------------|
| DPGR98552 | 454 x 270 x 26 |



Glass Rinsing & Filling Station

| CODE | WIDTH x DEPTH x HEIGHT mm |
|-----------|------------------------------------|
| DPGR98553 | 450 x 450 x 26 (139 w / container) |

Replacement parts and accessories are available, please contact us on 01327 311144 or sales@die-pat.co.uk for further details.

Please order by 4pm for next-day delivery. Timed and special deliveries can also be arranged.

Glass, Jug & Container Rinsers

Inset Jug Rinser

Ideal for anywhere where the rinsing of cups, jugs and glasses is required. This simple to use and maintain piece of equipment is a must for any restaurant, coffee house or juice bar to save time and money.

Available in 2 sizes – 1/6 GN and 1/3 GN



Inset Jug Rinser – 1/6 GN

Inset stainless steel jug rinser complete with rubber gasket. No electricity required to operate. Cleans jugs in seconds.

| CODE | LENGTH mm | WIDTH mm | DEPTH mm |
|-------|-----------|----------|----------|
| JR01A | 176 | 162 | 65 |

Inset Jug Rinser – 1/3 GN

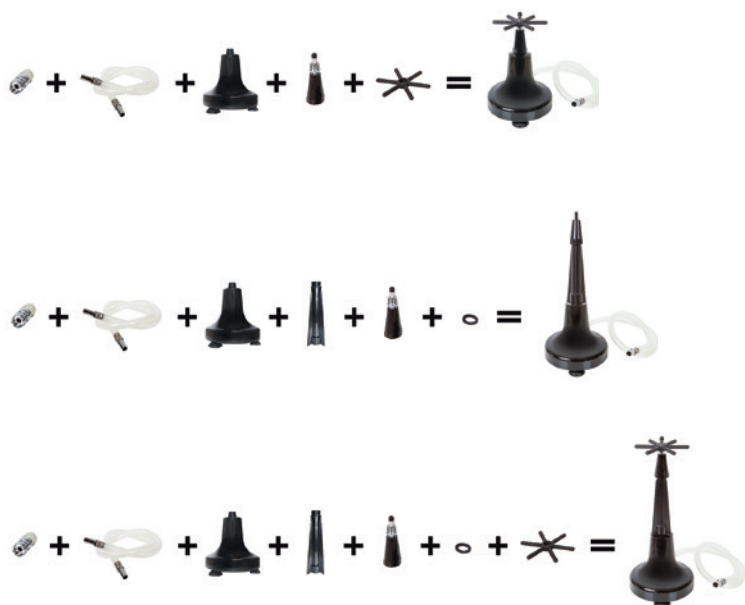
Inset stainless steel jug rinser complete with rubber gasket. No electricity required to operate. Cleans jugs in seconds.

| CODE | LENGTH mm | WIDTH mm | DEPTH mm |
|-------|-----------|----------|----------|
| JR01B | 325 | 176 | 65 |

Container Rinser

Simple to use, just press down on the platform to activate the spray – no electricity required. Unit is supplied complete with assembly kit to alter height and nozzles for cleaning different equipment. Connects directly onto the faucet and suction feet holds the rinser in place. Polycarbonate construction with a stainless steel spray nozzle.

ACCESSORIES INCLUDED:



Container Rinser

| CODE | HEIGHT |
|-------|-----------------------------|
| CR01C | 223mm extendable to 353.5mm |

Plate & Tray Lowerators

Front of House



Plate Lowerator | Unheated

Unheated plate lowerators for plates 190–340mm diameter. Plate capacity of up to 60 units.

| CODE | PLATE DIA. mm | HEIGHT x OUT DIA. mm | CAPACITY |
|---------|---------------|----------------------|----------|
| DPPL101 | 190 - 240 | 740 x 330 | 60 |
| DPPL102 | 230 - 280 | 740 x 370 | 60 |
| DPPL103 | 260 - 310 | 740 x 400 | 60 |
| DPPL104 | 290 - 340 | 740 x 430 | 60 |



Plate Lowerator | Heated

500W heated incounter plate lowerators with neon-light switch and selectable thermostat for plates 190–340mm diameter. Plate capacity of up to 60 units.

| CODE | PLATE DIA. mm | HEIGHT x OUT DIA. mm | CAPACITY |
|----------|---------------|----------------------|----------|
| DPPLH201 | 190 - 240 | 740 x 330 | 60 |
| DPPLH202 | 230 - 280 | 740 x 370 | 60 |
| DPPLH203 | 260 - 310 | 740 x 400 | 60 |
| DPPLH204 | 290 - 340 | 740 x 430 | 60 |



Tray Lowerator | Unheated

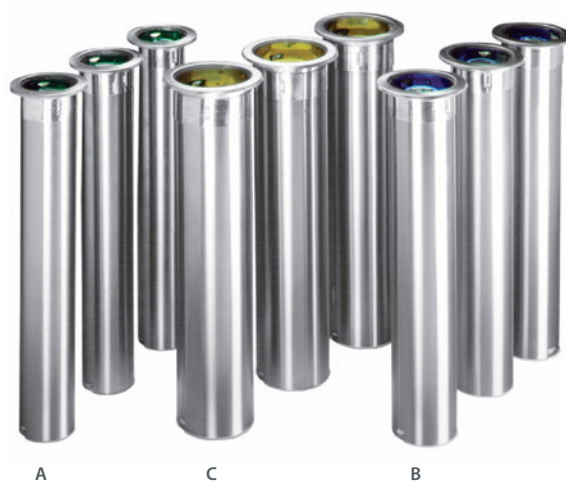
Unheated incounter tray/basket lowerators available for trays from 480 x 370mm to 530 x 370mm or for baskets from 500 x 500mm to 650 x 530mm. Loading capacity of up to 120 trays or 10 baskets.

| CODE | TRAY/BASKET LOAD AREA mm | UNIT W x D x H mm | TRAY/BASKET CAP. |
|---------|--------------------------|-------------------|------------------|
| DPTL300 | 530 x 650 | 620 x 726 x 730 | 120 / 10 |
| DPTL301 | 500 x 500 | 590 x 566 x 730 | 120 / 10 |
| DPTL302 | 530 x 370 | 620 x 436 x 730 | 120 / 10 |
| DPTL303 | 480 x 370 | 570 x 436 x 730 | 120 / 10 |
| DPTL304 | 530 x 325 | 620 x 391 x 730 | 120 / 10 |

Cup Dispensers

FEATURES

- Stainless steel construction with satin finish
- Top loading with spring tension
- Low profile - only 7mm protrusion above counter top
- Removable – a 1/4 turn releases the dispenser from the counter top
- Gasketed counter seal
- Wax and foam cup models



Cup Dispensers | 180 - 360 ml | 6 - 12 oz cup size

| CODE | TYPE - ITEM | CUP RIM DIA. mm | HOLE SIZE mm | OUTER FLANGE DIA. mm | LENGTH mm |
|---------|----------------------|-----------------|--------------|----------------------|-----------|
| C3200CV | A - Vertical mount | 56 - 81 | 110 | 135 | 610 |
| C3200CH | A - Horizontal mount | 56 - 81 | 110 | 135 | 610 |
| C3200CF | A - Foam cup | 56 - 81 | 110 | 135 | 610 |

Cup Dispensers | 360 - 720 ml | 12 - 24 oz cup size

| CODE | TYPE - ITEM | CUP RIM DIA. mm | HOLE SIZE mm | OUTER FLANGE DIA. mm | LENGTH mm |
|---------|----------------------|-----------------|--------------|----------------------|-----------|
| C3400CV | B - Vertical mount | 63 - 78 | 120 | 150 | 610 |
| C3400CH | B - Horizontal mount | 63 - 78 | 120 | 150 | 610 |
| C3400CF | B - Foam cup | 63 - 78 | 120 | 150 | 610 |

Cup Dispensers | 960 - 1380 ml | 32 - 46 oz cup size

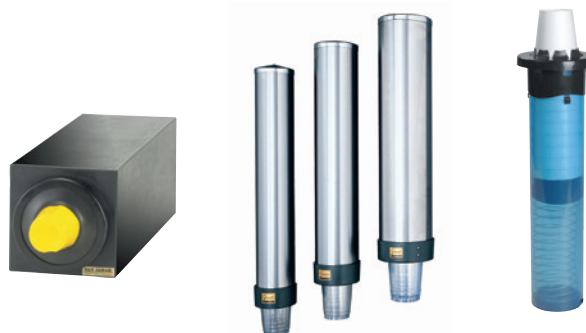
| CODE | TYPE - ITEM | CUP RIM DIA. mm | HOLE SIZE mm | OUTER FLANGE DIA. mm | LENGTH mm |
|---------|----------------------|-----------------|--------------|----------------------|-----------|
| C3500CV | C - Vertical mount | 102 - 124 | 145 | 170 | 610 |
| C3500CH | C - Horizontal mount | 102 - 124 | 145 | 170 | 610 |
| C3500CF | C - Foam cup | 102 - 124 | 145 | 170 | 610 |

EZ-Fit Cup Dispensers | 178 - 710 ml

| CODE | ITEM | CUP RIM DIA. mm | HOLE SIZE mm | OUTER FLANGE DIA. mm | LENGTH mm |
|-----------|----------------|-----------------|--------------|----------------------|-----------|
| C2210C | Vertical mount | 73 - 98 | 124 | 154 | 590 |
| C2210C-18 | Vertical mount | 73 - 98 | 124 | 154 | 457 |



Other styles available, please call us on 01327 31144 for more information.



Brackets



3 Rail Tray Slide Bracket | 200 lbs

Tray slide bracket in stainless steel, polished to a satin finish. For support of 25mm (1") rails. Load capacity: 200 lbs per 2 brackets.

| CODE | ITEM | HEIGHT x CENTRE SADDLES mm |
|---------|---------------------------|----------------------------|
| J194960 | 3 rail tray slide bracket | 108 x 102 (4") |



3 Rail Tray Slide Bracket - Fold Down | 150 lbs

Tray slide bracket in stainless steel. For support of 25mm (1") rails. Load capacity: 150 lbs per 2 brackets.

| CODE | ITEM | HEIGHT x CTR. SADDLES mm |
|---------|---------------------------------------|--------------------------|
| J194955 | 3 rail tray slide bracket - fold down | 86 x 102 (4") |



Heavy Duty Folding Shelf Brackets | 200 lbs

Heavy duty bracket folds down when not in use. Shelves can be easily removed for cleaning. Available with zinc plated steel mount or stainless steel mount. Load capacity: 200 lbs per 2 brackets.

| CODE | ITEM |
|---------|---|
| J174270 | Heavy duty folding bracket - Chrome plated zinc mount |
| J174273 | Heavy duty folding bracket - Stainless steel mount |



Heavy Duty Folding Shelf Bracket - Removable | 200 lbs

Heavy duty, removable bracket folds down when not in use. Shelves can be easily removed for cleaning. Stainless steel. Load capacity: 200 lbs per 2 brackets.

| CODE | ITEM |
|---------|--|
| J195000 | Heavy duty folding bracket - Stainless steel - Removable |



Folding Shelf Bracket | 200 lbs

Stainless steel folding shelf bracket. Load capacity: 200 lbs per 2 brackets.

| CODE | ITEM |
|---------|---|
| J194967 | Fold down shelf bracket - Stainless steel |



Fixed Shelf Bracket | 200 lbs

Fixed shelf bracket in stainless steel, polished to a satin finish. Load capacity: 200 lbs per 2 brackets.

| CODE | ITEM |
|---------|---------------------------------------|
| J194966 | Fixed shelf bracket - Stainless steel |

Components



90° Elbow & U Bend | 25 mm stainless steel tubing

90° Elbow and U Bend designed for rails, supports and tray slides. U Bend can be used with 3 rail tray slide brackets (Code: J194960 & J194955).

| CODE | ITEM |
|---------|-----------|
| J140117 | 90° Elbow |
| J134488 | U Bend |

CASTORS, LEGS & FEET



Commercial catering castors in light, medium and heavy duty options with either bolt hole or plate fittings. An extensive range is carried in stock for next-day delivery.

CASTORS

Grey TPE Tyre Castors

FEATURES

- Press steel fork assembly zinc plated
- Swivel head and double ball race and head seal
- Wheels with TPE-tyre (thermoplastic elastomer) on polypropylene rim
- Nut bolt and axle
- Plain bearing hub complete with metal thread guards
- Combined swivel and wheel brake



Grey TPE Castors, Bolt Hole Fitting | 75-100 kg Load

Swivel head institutional castors with grey rubber tyre, bolt hole fitting and load capacity of 75-100 kg. Complete with expander to suit 30mm box section (1.2-1.5mm wall).

| CODE | FITTING | WHEEL DIA. mm | HEIGHT mm | BOLT HOLE DIA. mm | LOAD CAPACITY kg |
|--------------|--------------------|---------------|-----------|-------------------|------------------|
| 183021/27S | Bolt Hole – Swivel | 75 | 100 | M12 | 75 |
| 183022/27S | Bolt Hole – Braked | 75 | 100 | M12 | 75 |
| 183023/P/27S | Bolt Hole – Swivel | 100 | 134 | M12 | 100 |
| 183024/P/27S | Bolt Hole – Braked | 100 | 134 | M12 | 100 |



Grey TPE Bolt Hole Fitting Castors, Height Adjustable | 100 kg Load

100mm grey rubber bolt hole castors providing up to 30mm adjustment.

| CODE | FITTING | WHEEL DIA. mm | HEIGHT mm | BOLT HOLE DIA. mm | LOAD CAPACITY kg |
|------------|--------------------|---------------|-----------|-------------------|------------------|
| 183023/AS1 | Bolt Hole – Swivel | 100 | 134 | M12 | 100 |
| 183024/AS1 | Bolt Hole – Braked | 100 | 134 | M12 | 100 |



Grey TPE Castors, Plate Fitting | 75-100 kg Load

Swivel head institutional castors with grey rubber tyre, plate fitting and load capacity of 75-100 kg.

| CODE | FITTING | WHEEL DIA. mm | HEIGHT mm | PLATE SIZE mm | HOLE CENTRES mm | LOAD CAPACITY kg |
|--------|----------------|---------------|-----------|---------------|-----------------|------------------|
| 182571 | Plate – Swivel | 75 | 103 | 105 x 80 | 80 x 60 | 75 |
| 182572 | Plate – Braked | 75 | 103 | 105 x 80 | 80 x 60 | 75 |
| 182573 | Plate – Swivel | 100 | 137 | 105 x 80 | 80 x 60 | 100 |
| 182574 | Plate – Braked | 100 | 137 | 105 x 80 | 80 x 60 | 100 |

Please order by 4pm for next-day delivery. Timed and special deliveries can also be arranged.

Elastic Rubber Wheel Castors

Expander fittings can also be purchased as a standalone item.

- FEATURES**
- Pressed steel fork assembly zinc plated bracket
 - Swivel head, double ball race and head seal
 - Plain bearing
 - Elastic rubber tyre with plastic centre
 - Plain bearing hub complete with thread guards
 - Colour coded thread guards on 100mm castors
 - Combined swivel and wheel brake



Elastic Rubber Castors, Bolt Hole Fitting | 200 kg Load

Medium duty bolt hole fitting castor, 100mm diameter elastic rubber wheel with nylon centre, 200kg load capacity.

| CODE | FITTING | WHEEL DIA. mm | HEIGHT mm | BOLT HOLE DIA. mm | LOAD CAPACITY kg |
|------------|---------------------------|---------------|-----------|-------------------|------------------|
| RT4LBHBLU | Bolt Hole – Swivel | 100 | 124 | M12 | 200 |
| RT4LBHBBLU | Bolt Hole – Swivel braked | 100 | 124 | M12 | 200 |



Elastic Rubber Castors, Plate Fitting | 200 kg Load

Medium duty plate fitting castor, 100mm diameter elastic rubber wheel with nylon centre, 200kg load capacity.

| CODE | FITTING | WHEEL DIA. mm | HEIGHT mm | PLATE SIZE mm | HOLE CENTRES mm | LOAD CAPACITY kg |
|-----------|-----------------------|---------------|-----------|---------------|-----------------|------------------|
| RT4LPBLU | Plate – Swivel | 100 | 125 | 105 x 80 | 80 x 60 | 200 |
| RT4LPBBLU | Plate – Swivel braked | 100 | 125 | 105 x 80 | 80 x 60 | 200 |

Nylon Wheel Castors

FEATURES

- Pressed steel fork assembly zinc plated
- Swivel head, double ball race and head seal
- Nut bolt and axle
- White nylon wheel
- Plain bore



White Nylon Castors, Bolt Hole Fitting | 100 kg Load

Swivel head institutional castors with white nylon wheel, bolt hole fitting and load capacity of 100 kg. Complete with expander to suit 30mm box section. (1.2-1.5mm wall).

| CODE | FITTING | WHEEL DIA. mm | HEIGHT mm | BOLT HOLE DIA. mm | LOAD CAPACITY kg |
|--------------|--------------------|---------------|-----------|-------------------|------------------|
| 179996NY/27S | Bolt Hole – Swivel | 75 | 100 | M12 | 75 |
| 179997NY/27S | Bolt Hole – Braked | 75 | 100 | M12 | 75 |
| 180185NY/27S | Bolt Hole – Swivel | 100 | 134 | M12 | 100 |
| 501319NY/27S | Bolt Hole – Braked | 100 | 134 | M12 | 100 |



FEATURES

- Pressed steel fork assembly zinc plated
- Swivel head and double ball race and head seal
- Nylon wheel
- Plain bore
- Combined swivel and wheel brake

Nylon Wheel Castors, Plate Fitting | 200 kg Load

Plate fitting swivel head castor: 100mm diameter medium duty nylon wheel, 200kg load capacity.

| CODE | FITTING | WHEEL DIA. mm | HEIGHT mm | PLATE SIZE mm | HOLE CENTRES mm | LOAD CAPACITY kg |
|----------|----------------|---------------|-----------|---------------|-----------------|------------------|
| RT4LPNY | Plate – Swivel | 100 | 125 | 105 x 80 | 80 x 60 | 200 |
| RT4LPBNY | Plate – Braked | 100 | 125 | 105 x 80 | 80 x 60 | 200 |

LEGS & FEET

Adjustable Foot Inserts



Flanged Foot Insert | 900 kg Load

Flanged foot insert to suit 30mm box section. 27mm adjustment.



Hexagon Foot Insert | 900 kg Load

Hexagon foot insert to suit 30mm box section. 27mm adjustment.

| CODE | TUBE SIZE mm | FOOT | MIN / MAX HEIGHT mm | LOAD RATING kg each | FINISH |
|-----------|--------------|---------|---------------------|---------------------|---------|
| INA30F/01 | 30 sq. | Flange | 23 / 50 | 900 | Natural |
| INA30H/01 | 30 sq. | Hexagon | 23 / 50 | 900 | Natural |



Flanged Foot Insert | 900 kg Load

Flanged foot insert to suit 40mm box section. 25mm adjustment.



Hexagon Foot Insert | 900 kg Load

Hexagon foot insert to suit 40mm box section. 25mm adjustment.

| CODE | TUBE SIZE mm | FOOT | MIN / MAX HEIGHT mm | LOAD RATING kg each | FINISH |
|-----------|--------------|---------|---------------------|---------------------|---------|
| INO40F/01 | 40 sq. | Flange | 39 / 64 | 900 | Natural |
| INO40H/01 | 40 sq. | Hexagon | 39 / 64 | 900 | Natural |

Foot Extension Kit

Foot Extension Kit | 75 mm

75mm foot extension kit, including insert body, for use with 30mm box section. (1.2-1.5mm wall).

| CODE | ITEM |
|-----------|---|
| IN75S-KIT | Foot extension kit for 30mm box section |



Equipment Legs - Heavy Duty



Heavy Duty Equipment Legs | 41 mm dia.

Stainless steel, heavy duty equipment legs with hexagon base. 41mm outer diameter. Available in 100mm, 125mm and 150mm heights. Supplied with removable mounting plate (90 x 90mm). Hole centres: 70 x 70mm.

| CODE | TUBE SIZE mm | FOOT | HEIGHT mm | SAFE ADJUSTMENT mm | LOAD RATING kg each | MATERIAL |
|----------|--------------|---------|-----------|--------------------|---------------------|-----------------|
| A41-100H | 41 OD | Hexagon | 100 | 30 | 900 | Stainless steel |
| A41-125H | 41 OD | Hexagon | 125 | 30 | 900 | Stainless steel |
| A41-150H | 41 OD | Hexagon | 150 | 30 | 900 | Stainless steel |



Heavy Duty Equipment Legs | 50 mm dia.

Stainless steel, heavy duty equipment legs with hexagon base. 50mm outer diameter. Available in 100mm, 125mm and 150mm heights. Supplied with removable mounting plate (90 x 90mm). Hole centres: 70 x 70mm.

| CODE | TUBE SIZE mm | FOOT | HEIGHT mm | SAFE ADJUSTMENT mm | LOAD RATING kg each | MATERIAL |
|----------|--------------|---------|-----------|--------------------|---------------------|-----------------|
| A50-100H | 50 OD | Hexagon | 100 | 30 | 900 | Stainless steel |
| A50-125H | 50 OD | Hexagon | 125 | 30 | 900 | Stainless steel |
| A50-150H | 50 OD | Hexagon | 150 | 30 | 900 | Stainless steel |

Please order by 4pm for next-day delivery. Timed and special deliveries can also be arranged.



Die-Pat Divisions Limited
The Die-Pat Centre
Broad March, Daventry,
Northamptonshire NN11 4HE

HOW TO FIND US

We are situated in Northamptonshire, on the south east side of Daventry, within easy reach of the A45. We are approximately 15 minutes drive from the M1 (southbound exit at junction 18, or northbound exit at junction 16).

FROM THE NORTH

- Exit M1 at Junction 18
- Follow A5 South to A361 signposted Daventry
- Follow A425 Northern Way, then South Way, signposted Long March Industrial Estate
- Take first right into Broad March
- The Die-Pat Centre is situated on the right hand side

FROM THE SOUTH

- Exit M1 at Junction 16
- Follow A45 signposted Daventry
- At first roundabout take third exit onto South Way
- Take first left into Long March
- Take first right into Broad March
- The Die-Pat Centre is situated on the right hand side

Call: 01327 311144 | sales@die-pat.co.uk | www.die-pat.co.uk

