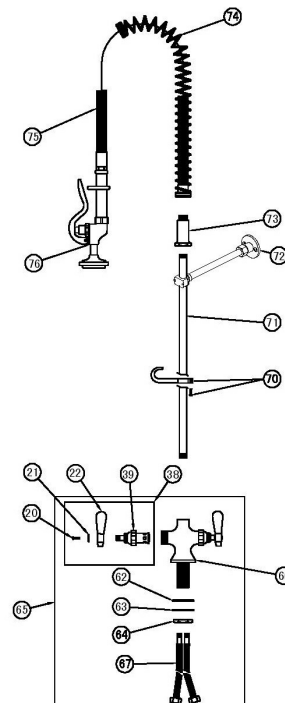
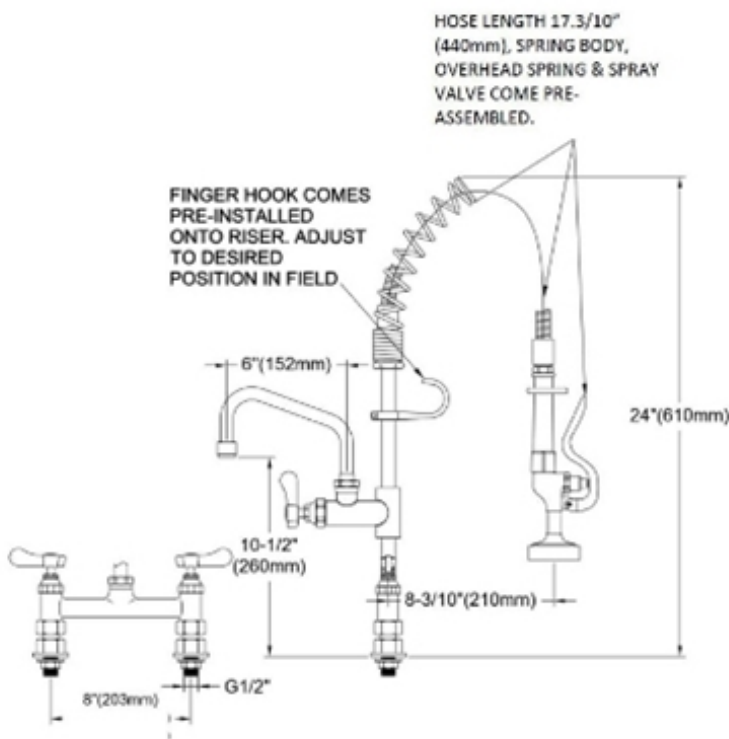




- Monobloc mounted mini pre-rinse unit with flexible hose.
- WRAS approved
- 8" (203mm ) centre deck mounted
- 7" (180mm) riser
- 22" (560mm) flexible stainless steel hose
- Spray valve
- Supplied c/w add-on faucet and 6" swing nozzle
- Heavy duty construction
- Includes check valve to prevent cross-flow



20	Screw, Lever, Handle
21	Index Button
22	Lever Handle
38	Asm, Lever Handle (LH)
39	Asm, Spdl LH-Eterna W/SPring
62	O-Ring
63	Level
64	Locknut, Shank
65	Asm, Body
66	Body, Faucet
67	Flexible Hose
70	Assembly, Finger Hook & Screw
71	Nipple, 3/8" x 24
72	Wall Bracket
73	Spring Body
74	Spring, Overhead
75	Assembly Flex S/S Hose
76	Assembly Spray Valve