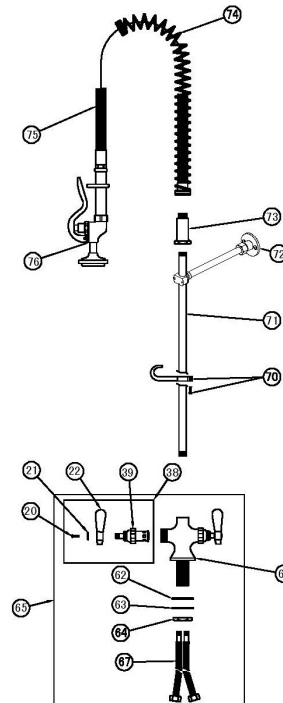
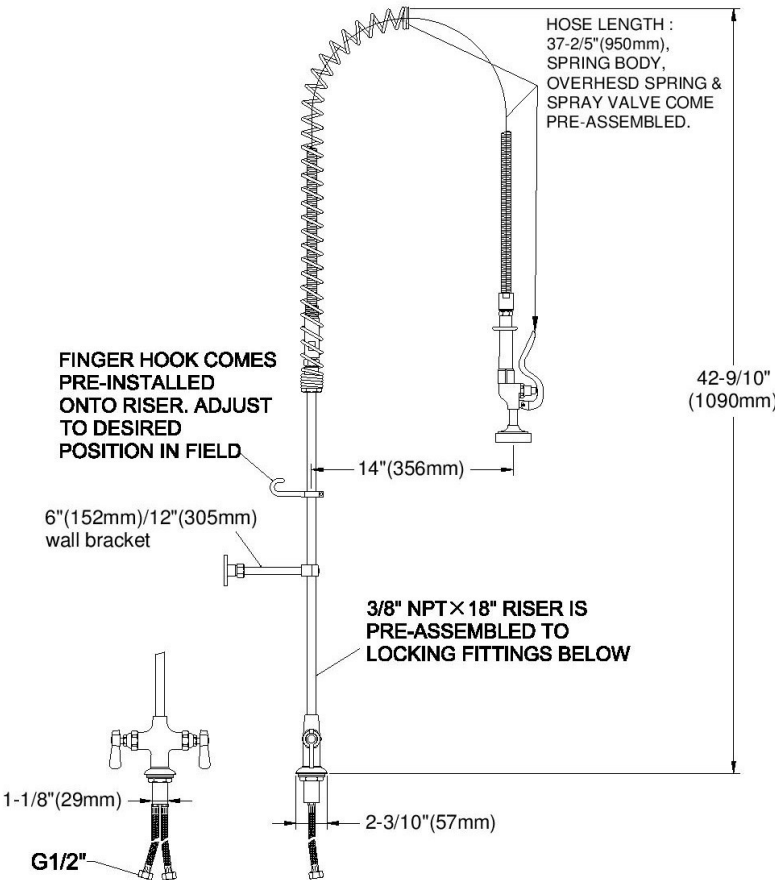




- Deck mounted monobloc pre-rinse unit
- Supplied with flexible hose and wall bracket
- **Optional bowl-filling tap (6", 8" or 12")**
- Pre-assembled ready for installation
- High quality components for commercial use
- WRAS approved
- Replacement accessories available

- 20" (510mm) riser brass pipe
- 44" (1118mm) flexible stainless steel hose
- Santoprene inner pipe
- 6" (152mm) or 12" (305mm) wall bracket
- Includes check valve to prevent cross flow
- Spray valve conforms to ANSI/ASTM F2324-03



| | |
|----|-------------------------------|
| 20 | Screw, Lever, Handle |
| 21 | Index Button |
| 22 | Lever Handle |
| 38 | Asm, Lever Handle (LH) |
| 39 | Asm, Spdl LH-Eterna W/SPring |
| 62 | O-Ring |
| 63 | Level |
| 64 | Locknut, Shank |
| 65 | Asm, Body |
| 66 | Body, Faucet |
| 67 | Flexible Hose |
| 70 | Assembly, Finger Hook & Screw |
| 71 | Nipple, 3/8" x 24 |
| 72 | Wall Bracket |
| 73 | Spring Body |
| 74 | Spring, Overhead |
| 75 | Assembly Flex S/S Hose |
| 76 | Assembly Spray Valve |